

MADE IN TEXAS
LOADCRAFT INDUSTRIES, LTD.

LOADCRAFT



The Best Products, Built by the Best People, for the Best Clients
...Throughout the World.

(800)803-0183

3811 N. BRIDGE • BRADY, TEXAS 76825

www.LOADCRAFT.com

LOADCRAFT INDUSTRIES, LTD.

WE BUILD RIGS.
LOADCRAFT INDUSTRIES, LTD.



650HP-C1
6 or 7 Axle Carrier

- 112'/350K Mast
- CAT C18 700 HP
- 42x12 Water Circulating Brake Flanges
- Self Contained Brake Water Cooling System
- Dual Kobelt 54.5"x10" Disc Assist Brake

RIGS
drawworks
WORKOVER
mud systems
PARTS/SERVICE



(800)803-0183

3811 N. BRIDGE
BRADY, TEXAS 76825

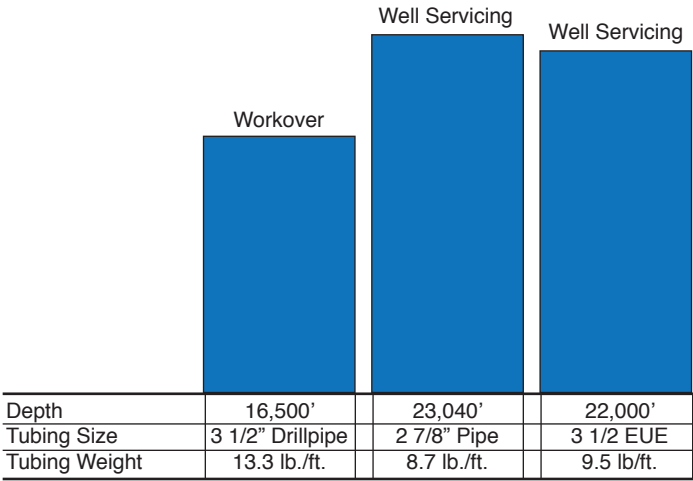
www.LOADCRAFT.com



LCI-650-C1



LCI-650-C1



Drawworks Model 650/ 42 X 12

Main Drum

- Demountable, forged steel brake rims are 42" diameter x 12" wide.
- Brakes are cooled by circulating water.
- Drum shaft diameter is 6 1/2".
- Drum diameter: 18" x 38"
- Lebus shell: 1 1/8"
- Single line pull is 46,000 lbs. with Lebus jacket and on the second layer of wireline.
- Outboard WPT 324HD clutch.
- Auxilliary Brake: Kobelt Disc Assist 4 X 10 1/2 X 54.5
Dual Disc Assist Brake Torq: 74,870 Ft. lbs ; 898,440 In. lbs

Mast Model 112 X 350k (per API 4F)

- Tube leg fixed base design allows fast positioning of rig before mast is raised. Clear height is 112' below crown.
- Static hook load capacity on 8 lines 330,000 lbs, on 10 lines 350,000 lbs.
- Crossover crown with 42" fast line sheave plus five 30" sheaves.
- All sheaves mounted on Timken double row bearings.
- Two hydraulic raising rams and two hydraulic telescoping rams.
- 1 1/8" wire line standard.

Capacity Tubing Board

- 16,500 - 3 1/2 EUE (4 3/8")
- 23,100 - 2 7/8 EUE (3 1/2")

Drive Train

- C18 CAT Engine w/ 700hp @2100
- Allison CLT 6600 straight thru transmission.
- Engine, transmission, and right angle mounted in rubber above deck for easy access.
- Pressure lubricated drop box for drive to drawworks, rotary drive and rear bogies.

Carrier - Six Axle

- Three front steering axles (rated at 22,000 lbs. each) have spring suspension.
- Rear tandem driving axles (rated at 50,000 lb. total) have walking beam suspension, Hendrickson brand.
- One (non-driving) lift axle with air bag lift suspension is rated at 25,000 lb. capacity.

Option

- 7th (non-driving) lift axle with air bag lift suspension

Controls and Hydraulic System

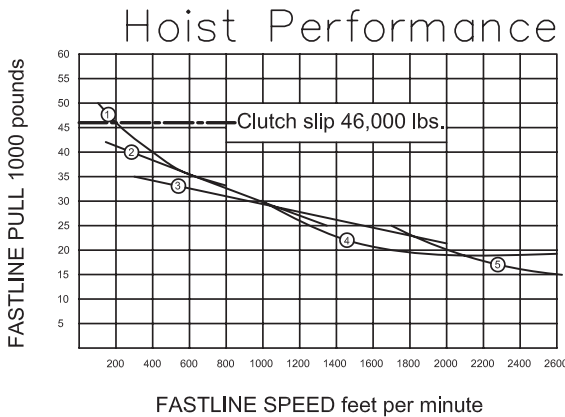
- Controls for all leveling jacks, mast raising and extending rams, engine, transmission and main drum are located at one position for simple quick rig-up. Operator's console can be provided moveable to various heights.

Dual Hydraulic System

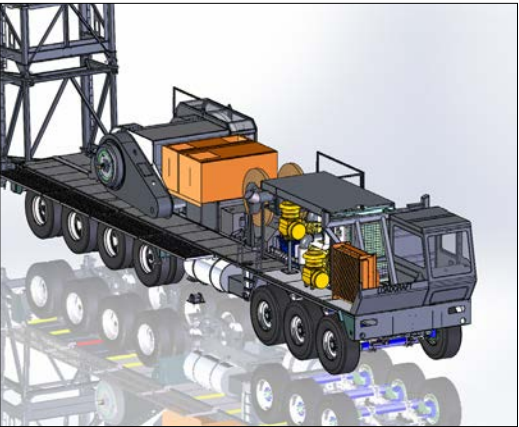
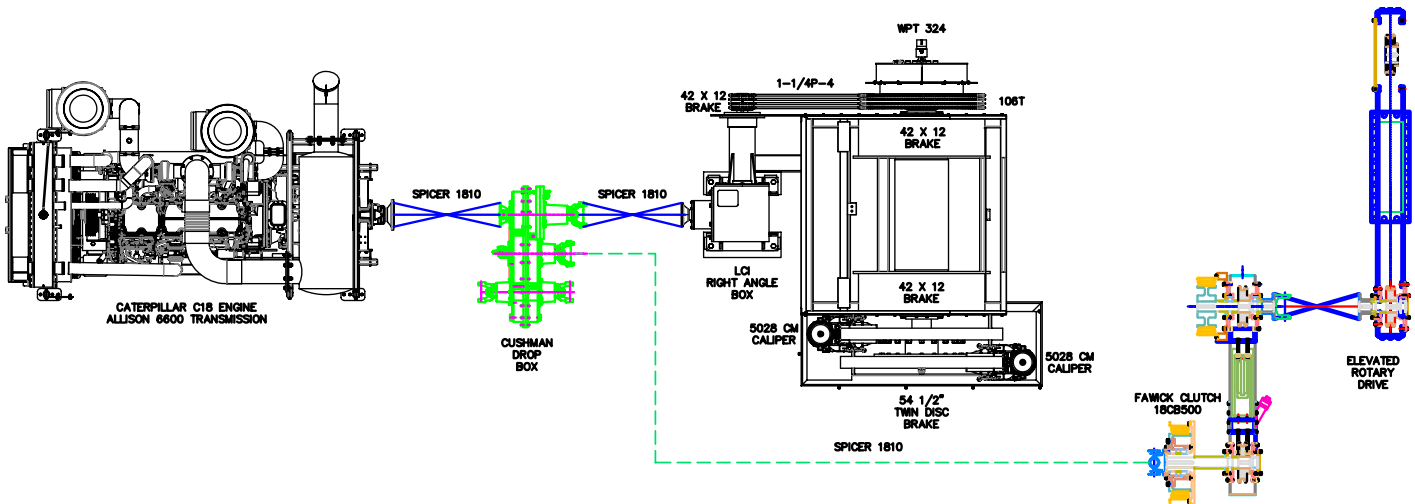
- 50 gpm hydraulic pump for all rig hydraulics and tong operation.
- Hydraulic driven water circulating brake system
- Filters provided on pressure and return lines.

Options

- Dingle or dual 8000 lb. catline winch for safe, efficient lifting.
- Hydraulic catworks for precise control of make-up and break-out torques.
- Folding platforms off operator side of rig.
- Spare line spool.
- Mast lite package.
- Rig ramps and crossbase supports.
- Rig substructure- Hydraulic Telescopic type.
- Rotary chain case drive.



Power Flow Diagram



- 112'/350K Mast
- CAT C18 700 HP
- 42x12 Water Circulating Brake Flanges
- Self Contained Brake Water Cooling System
- Dual Kobelt 54.5"x10" Disc Assist Brake



Vehicle Layout

