

LOADCRAFT INDUSTRIES, LTD.

WE BUILD RIGS.
LOADCRAFT INDUSTRIES, LTD.



RIGS
drawworks
WORKOVER
mud systems
PARTS/SERVICE

(800)803-0183
3811 N. BRIDGE
BRADY, TEXAS 76825
www.LOADCRAFT.com





LCI-2000



Drawworks

- LCI-2000 Single Drum Electric
- Drum Size 27 x 50
- Brakes 54 x 12 Water Circulating

Auxillary Brake

- Disc Model 336

Rotary Drive

- 752 Independent Electric Drive

Mast

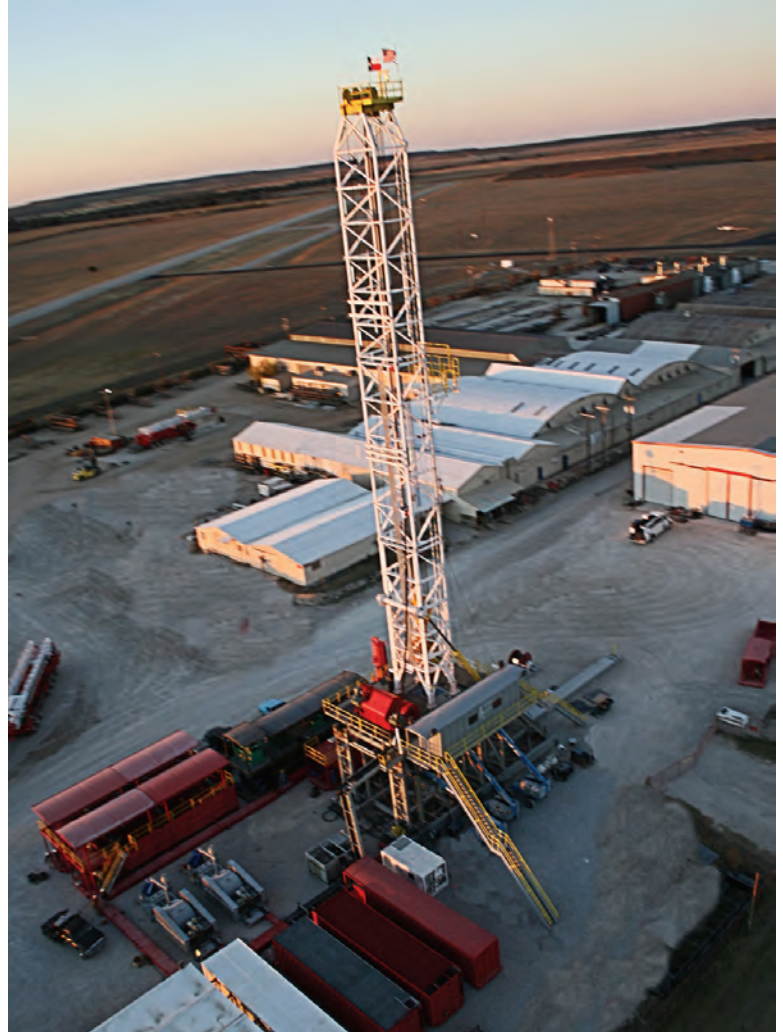
- 147' x 1.2 mK (3 Section Free Standing)
- Crown - 12 Line String for 1 3/8" Wire Line
- Adjustable Racking Board
- 15,000' x 5" DP
- Top Head Drive Rails Included
- Mast Hydraulically Raised

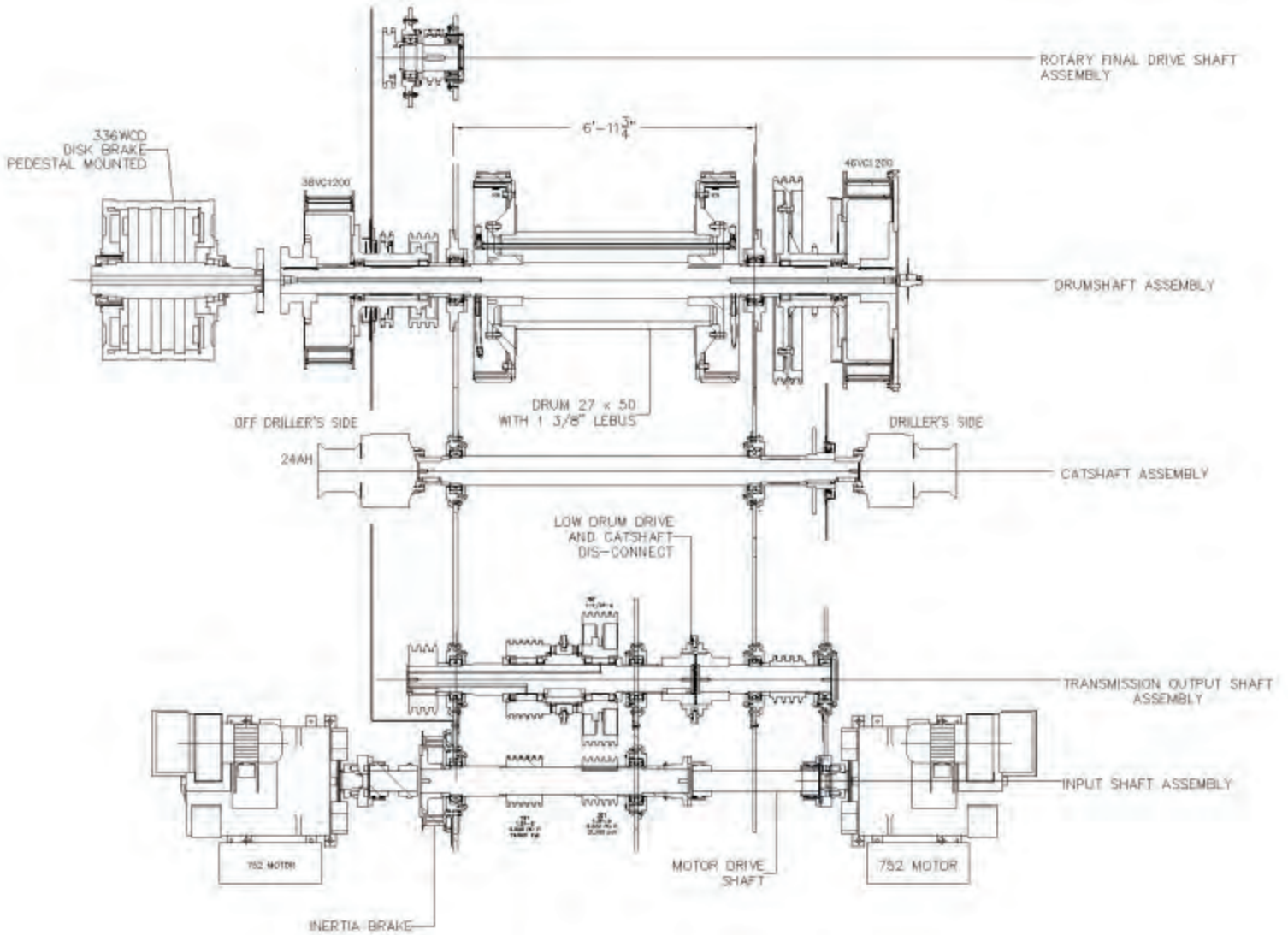
Sub Structure

- Parallelogram 30' SUB
- Independent Rotary Drive for 37 1/2" Table
- Rotary Beam for 25' Clear Height (2 ea. x 25T)
- 1,200,000 lbs. Rotary Capacity

Available Options

- Traveling Frame
- Substructure
- Top Drive
- Rotary Drive
- Rotary Table
- 500 or 650 Ton Block







LCI-1500

Drawworks

- LCI-1500 Single Drum Electric
- Drum Size 27 x 50
- Brakes 54 x 12 Water Circulating

Auxillary Brake

- Disc Model 336

Rotary Drive

- 752 Independent Electric Drive

Mast

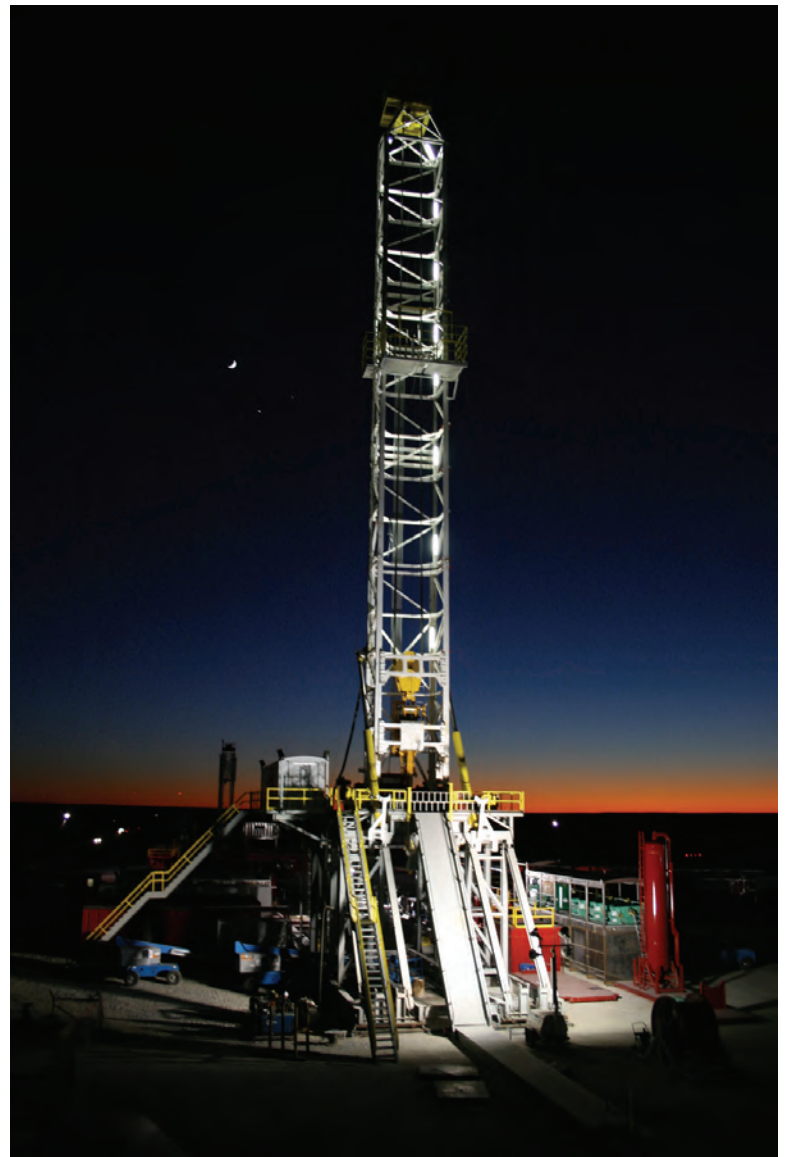
- 147' x 1.0 mK (3 Section Free Standing)
- Crown – 10 or 12 Line String for 1 3/8" Wire Line
- Adjustable Racking Board
- 15,000' x 5" DP
- Top Head Drive Rails Included
- Mast Hydraulically Raised

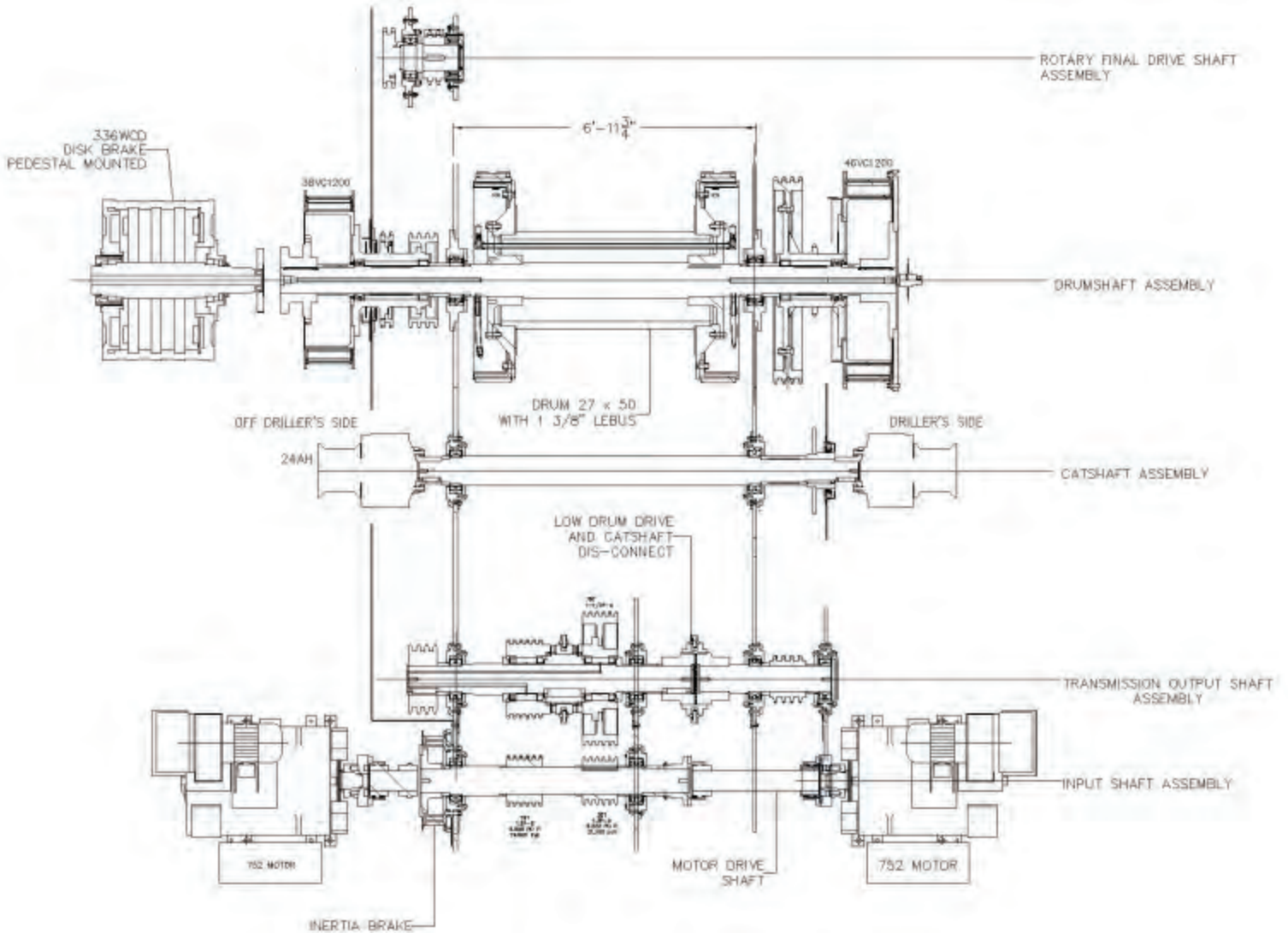
Sub Structure

- Parallelogram 30' SUB
- Independent Rotary Drive for 37 1/2" Table
- Rotary Beam for 25' Clear Height (2 ea. x 25T)
- 1,000,000 lbs. Rotary Capacity

Available Options

- Traveling Frame
- Substructure
- Top Drive
- Rotary Drive
- Rotary Table
- 500 Ton Block







LCI-1000-BBL



MUD SYSTEM (1000 BBL)

Two Tank Mud System (12' W x 8' H x 50' L)

- > 500 BBL suction tank - round bottom
- > 500 BBL solids tank - round bottom
- > 100 BBL pill tank

Trip Tank/Gas Buster

One 8' W x 40' L Skid with:

- > One 2 1/16" x 4 1/16" 5,000 lbs. choke (four 2 1/16" 5,000 lbs. valves, four 4 1/16" 5,000 lbs. valves, one cross, one 2 1/16" manual chokes) on one end of skid. One end of skid plumbed for 2" hydraulic super choke
- > One 50 BBL twin trip tank
- > Two 2" x 3" centrifugal pumps with 20 HP electric motors with 30" OD poorboy gasbuster in center that lays over on choke to transport

Water Tank (10' W x 8' H x 40' L)

- > 500 BBL water tank
- > Two 2" x 3" centrifugal pumps 20 HP
- > Water tank support dog house frame

Dog House (10' W x 20' L)

- > One v-crimped top dog house that is placed in position on top of the water tank to 18' sub floor

Generator House (10' W x 8' H x 45' L)

- > One generator house with 1/4 crimped walls
- > Two generator sets, one at each end of the skid with MCC located at the center of the unit
- > Two C15 generator sets at each end

10,000 Gal. Fuel Tank (8' W x 8' H x 35' L)

One v-crimped square fuel tank

- > Two 1 HP electric fuel charge pumps
- > One 20' L v-crimped change house w/12 lockers and 1 bench
- > 1/4 v-crimp walls
- > One lubester tank (3 compartment)

Mud Pumps

- > Two each 1,000 HP Triplex
- > Master skids with pumps
- > Cat 3508 Series engines for power, belt driven
- > 5 x 6 charge pumps on master skid

Mud Pump Options

- > Engine transmission drive system

Junk Basket / Closing Unit (8' x 36' Skid)

- > Junk basket 8' x 20'
- > Bop closing unit (10 bottle)
- > Bop piping to end of skid

Locker / Parts Skid

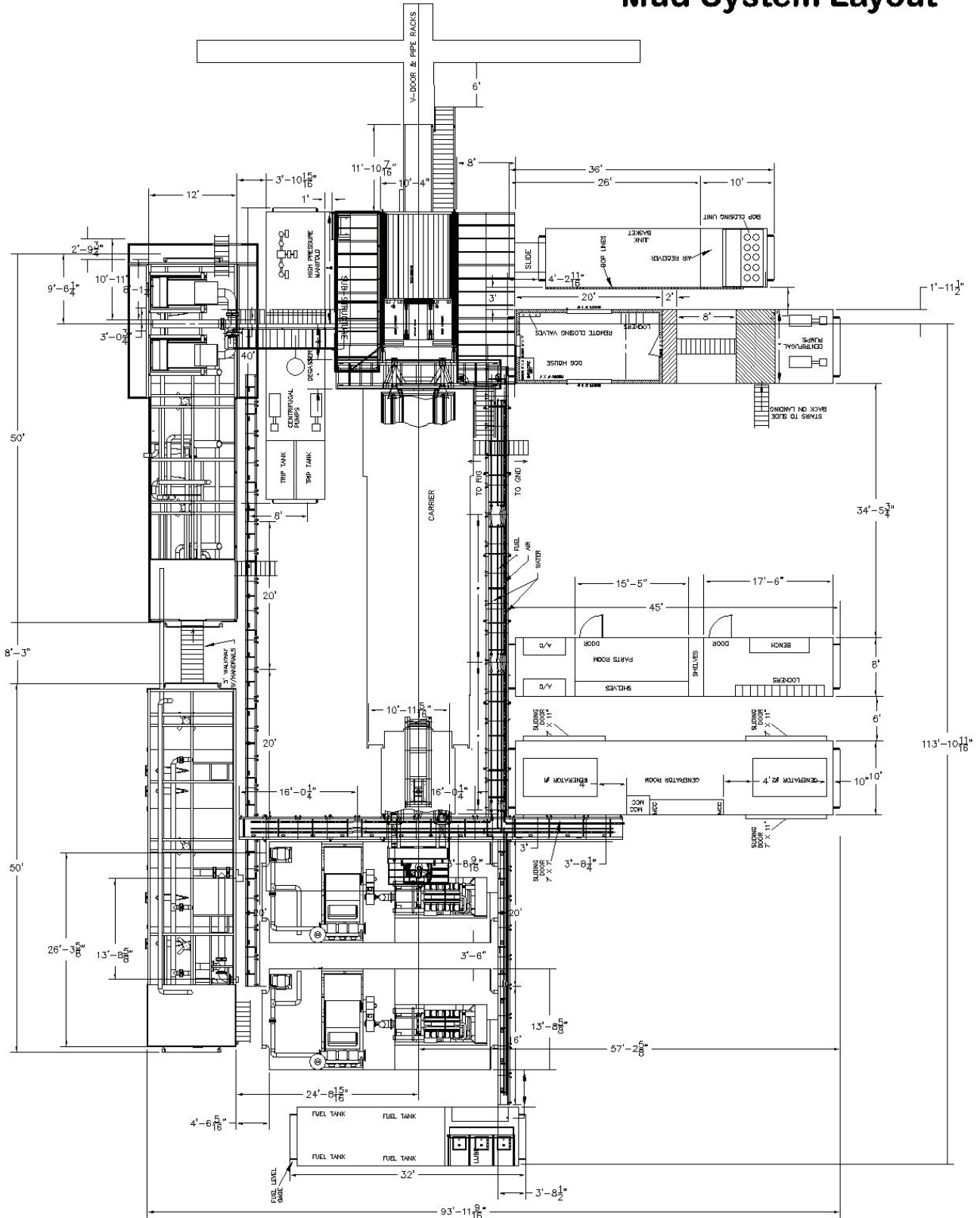
- > 1/4 v-crimp wall structure
- > 8' x 15 1/2' tool room
- > 8' x 17 1/2' locker room
- > Front skid with two 25 HP air compressors
- > Lites, knowledge box, and 4 lockers

Solids Equipment

- > Per customer order

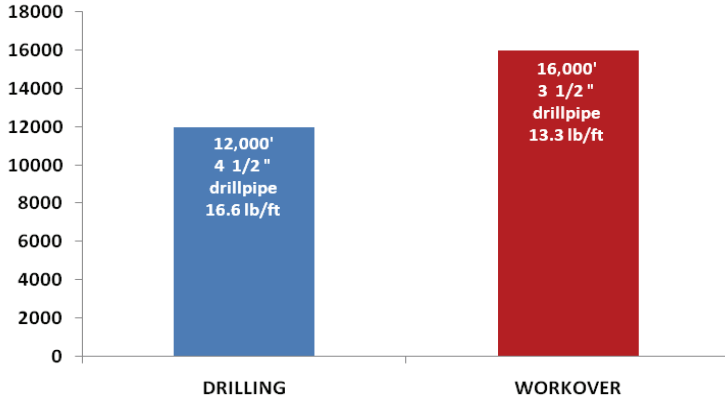


Mud System Layout





LCI-1100-TM



Mechanical Drawworks Model 1100/4212

Main Drum

- > Demountable, forged steel brake rims are 42" diameter x 12" wide
- > Brakes are cooled by circulating water
- > Drum shaft diameter is 7"
- > Single line pull is 51,800 lbs.
- > Design with 2 x C15 power @ 540 HP
- > Two speed transmission shaft
- > High and low speed clutch assembly
- > Torque converter w/engine
- > Wichita 325 Auxiliary brake standard

Drawworks Options

- > Parmac Model V80 hydrobrake
- > LEBUS grooving on main drum - 1 1/8" diameter
- > Crown block saver

Mast Model 122 x 440 Twin Box (per API 4F)

- > Twin box leg fixed base design allows fast positioning of rig before mast is raised. Clear height is 122' below crown.
- > Static hook load capacity: on 10 lines 440,000 lbs.
- > Crossover crown with 36" fast-line sheave plus five 30" sheaves
- > All sheaves mounted on Timken double-row bearings
- > Racking capacity 12,000' of 4 1/2" drill pipe
- > Two hydraulic raising rams and two hydraulic telescoping rams
- > 1 1/8" wire line standard

Mast Options

- > Mast lights, standpipes, hydraulic catheads

Drive Train

- > Power is by twin Cat C15 @ 540 HP w/torque converters
- > Chain drive with oil spray lubrication
- > Two-speed transmission shaft with high & low drum clutch shaft
- > Shifting is done with air activated jaw clutch
- > Main drive is 1 1/2 triple, two-speed is by 1 3/4 triple chain

Trailer

- > Four axle heavy duty trailer is main frame
- > Four axle heavy duty air ride suspension @ 25,000 lbs. capacity
- > Attachments are ready for rear dolly and front jeep

Trailer Options

- > Tool boxes, extra fuel tanks, spare tires, operator platforms can be supplied as needed

Dollies

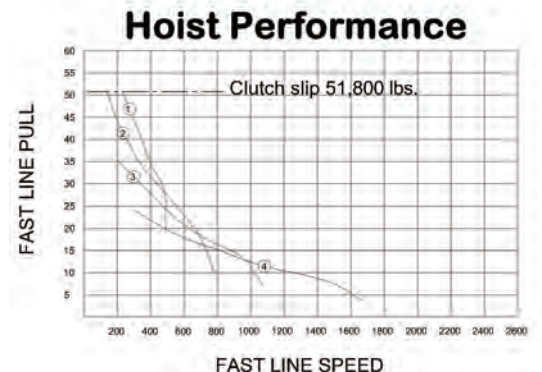
- > Front Attachment: 2 axle jeep dolly
- > Rear Attachment: 2 axle rear air ride dolly

Controls and Hydraulic System

- > Hydraulic power is supplied from 65 HP electric motor APU
- > The console panel for all leveling jacks, mast raising and extending cyl., engine, transmission, and main drum are located at one position for simple, quick rig-up. Operator's console can be provided movable to 12', 15', or 18' 6".
- > 50 gpm hydraulic pump for all rig hydraulics and tong operation
- > Filters provided on pressure and return lines

Options

- > 70 gpm hydraulic pump
- > Hydraulic oil cooler for continuous use and hot climate applications
- > Single or dual 8,000 lbs. or 12,000 lbs. catline winch for safe, efficient lifting
- > Hydraulic catworks for precise control of make-up and break-out torques
- > Cold weather packages for -40° operation
- > Folding platforms off operator side of rig
- > Spare line spool
- > Mast lite package
- > Rig ramps and crossbase supports
- > Rig substructure - Hydraulic Telescopic type
- > Rotary chain case drive
- > Optional 5th trailer axle with lift

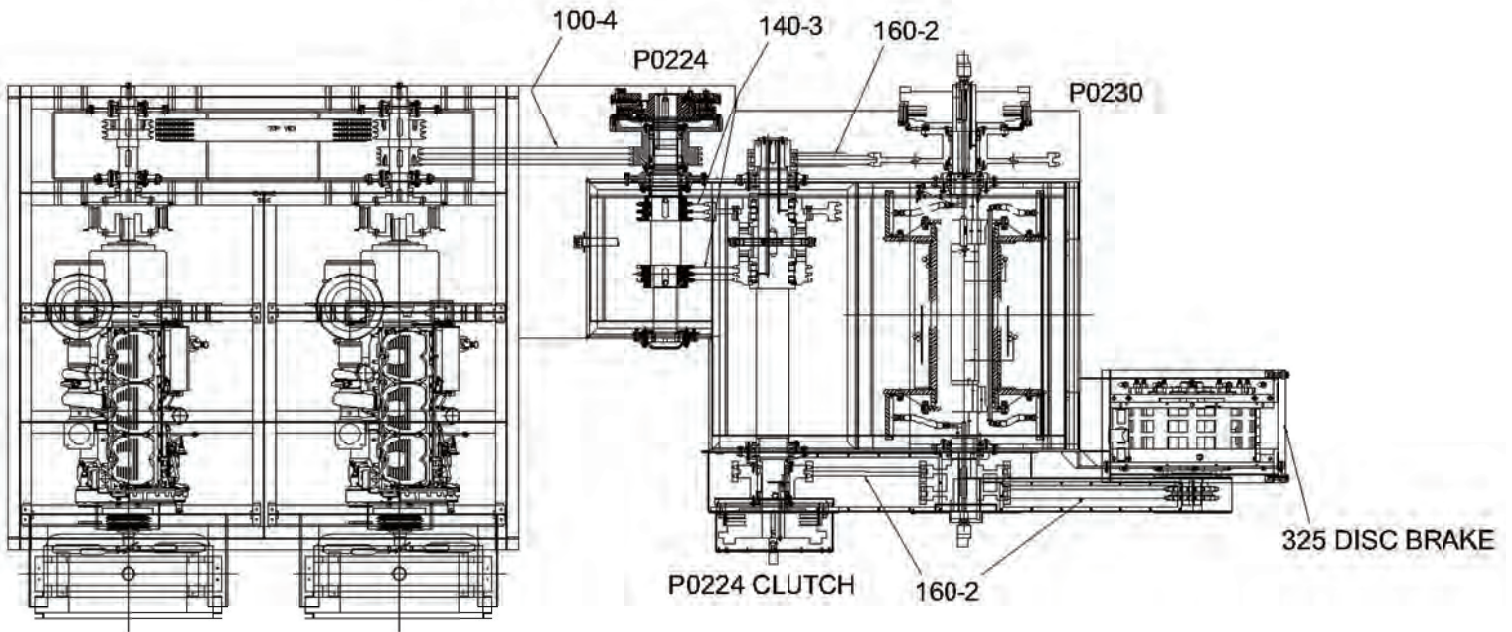




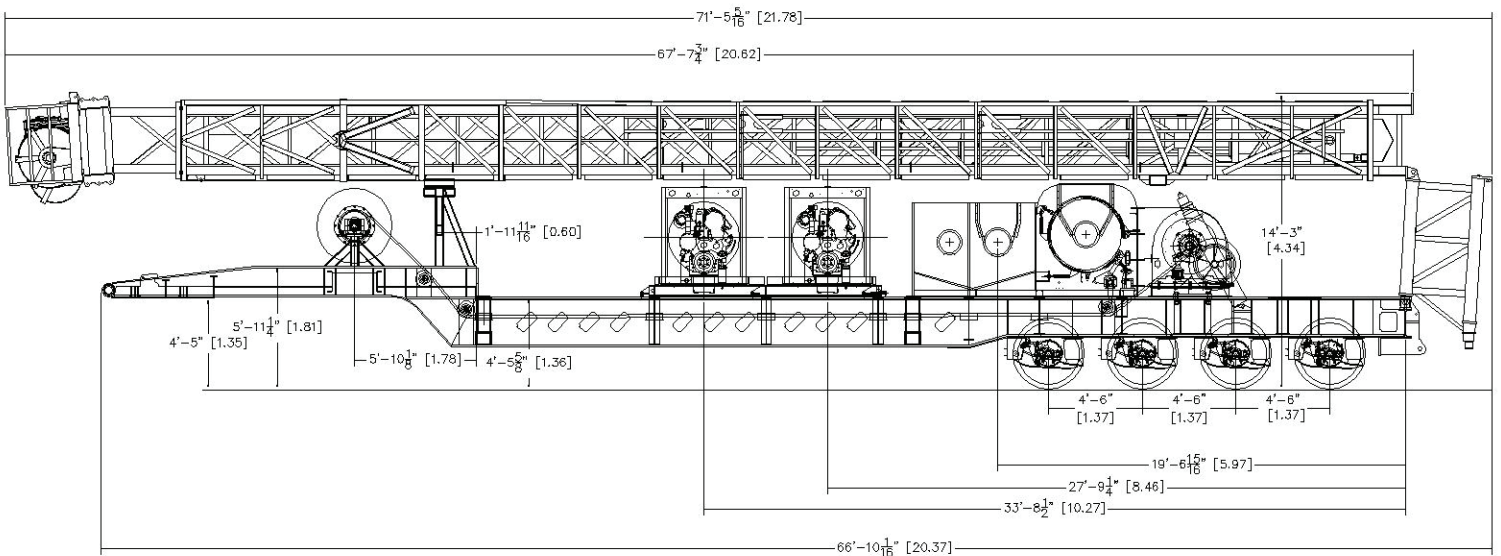
LCI-1100-TM



Power Flow Diagram

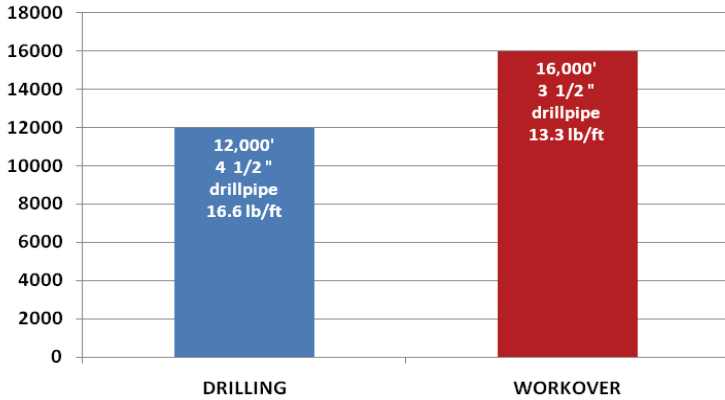


Vehicle Layout





LCI-1100-TE



Electric Drawworks Model 1100/4212-42

Main Drum

- > Demountable, forged steel brake rims are 42" diameter x 12" wide
- > Brakes are cooled by circulating water
- > Drum shaft diameter is 7"
- > Single line pull is 51,800 lbs.
- > Design with 2 x 762 motors 600 HP
- > Two speed transmission shaft
- > High and low speed clutch assembly
- > Wichita 325 Auxiliary brake standard

Drawworks Options

- > Parmac Model V80 hydrobrake
- > LEBUS grooving on main drum - 1 1/8" diameter
- > Crown block saver

Mast Model 122 x 440 Twin Box (per API 4F)

- > Twin box leg fixed base design allows fast positioning of rig before mast is raised. Clear height is 122' below crown.
- > Static hook load capacity: on 10 lines 440,000 lbs.
- > Crossover crown with 36" fast-line sheave plus five 30" sheaves
- > All sheaves mounted on Timken double-row bearings
- > Racking capacity 12,000' of 4 1/2" drill pipe
- > Two hydraulic raising rams and two hydraulic telescoping rams
- > 1 1/8" wire line standard

Mast Options

- > Mast lights, standpipes, hydraulic catheads

Drive Train

- > Power is by twin 762 electric motors
- > Chain drive with oil spray lubrication
- > Two-speed transmission shaft with high & low drum clutch shaft
- > Shifting is done with air activated jaw clutch
- > Main drive is 1 1/2 triple; two speed is by 1 3/4 triple chain

Trailer

- > Four axle heavy duty trailer is main frame
- > Four axle heavy duty air ride suspension @ 25,000 lbs. capacity
- > Attachments are ready for rear dolly and front jeep

Trailer Options

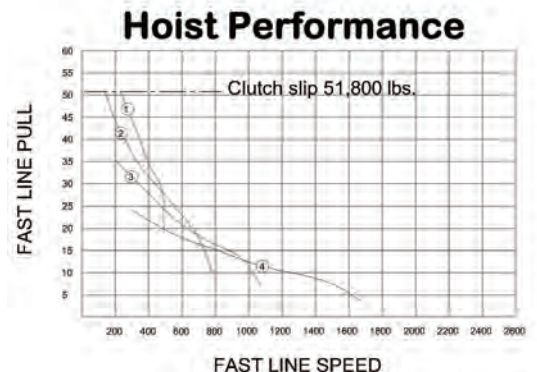
- > Tool boxes, extra fuel tanks, spare tires, operator platforms can be supplied as needed

Controls and Hydraulic System

- > Hydraulic power is supplied from 4 cylinder diesel in combination with 65 HP electric motor APU
- > The console panel for all leveling jacks, mast raising and extending cyl., engine, transmission, and main drum are located at one position for simple, quick rig-up. Operator's console can be provided movable to 12', 15', or 18' 6".
- > 50 gpm hydraulic pump for all rig hydraulics and tong operation
- > Filters provided on pressure and return lines

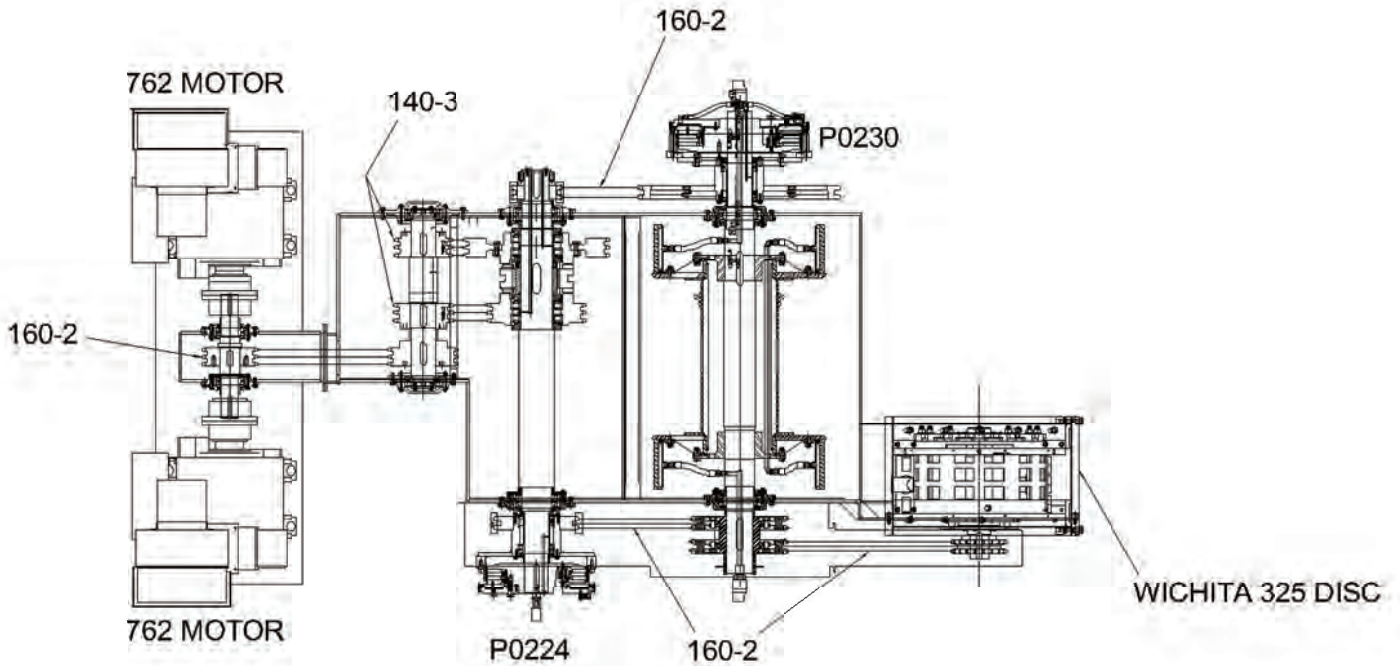
Options

- > 70 gpm hydraulic pump
- > Hydraulic oil cooler for continuous use and hot climate applications
- > Single or dual 8,000 lbs. or 12,000 lbs. catline winch for safe, efficient lifting
- > Hydraulic catworks for precise control of make-up and break-out torques
- > Cold weather packages for -40° operation
- > Folding platforms off operator side of rig
- > Spare line spool
- > Mast lite package
- > Rig ramps and crossbase supports
- > Rig substructure - Hydraulic Telescopic type
- > Rotary chain case drive
- > Optional 5th trailer axle with lift

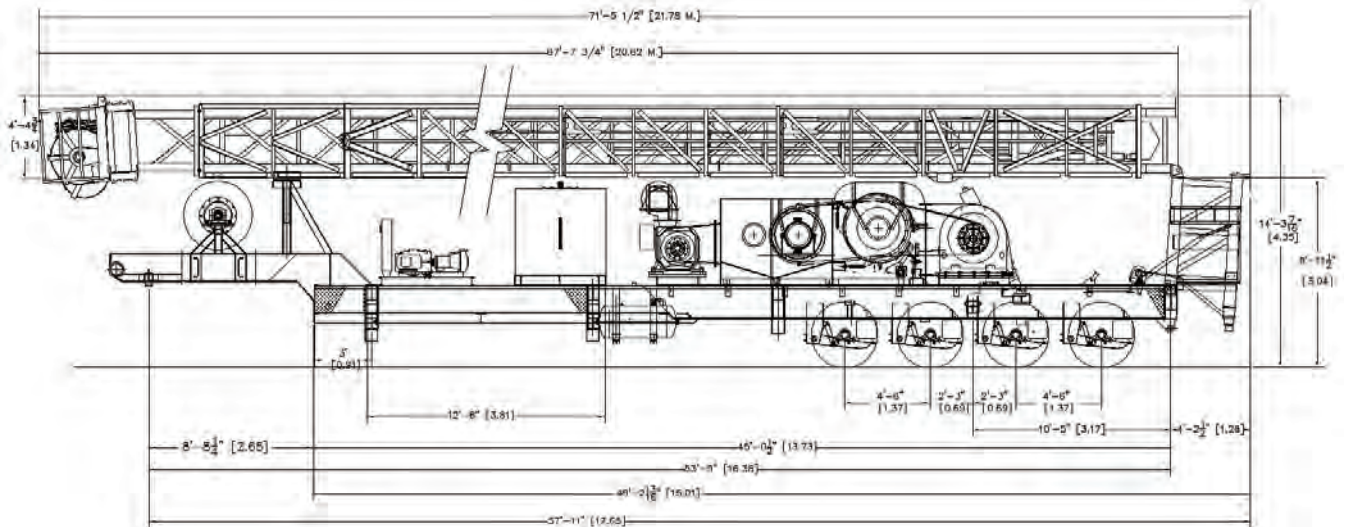




Power Flow Diagram

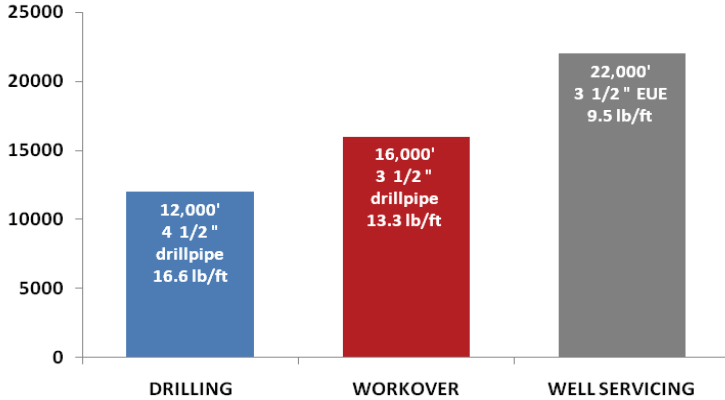


Vehicle Layout





LCI-1100-T



Drawworks Model 1100/4212-42

Main Drum

- > Demountable, forged steel brake rims are 42" diameter x 12" wide
- > Brakes are cooled by circulating water
- > Drum shaft diameter is 7"
- > Single line pull is 51,800 lbs.
- > Outboard P0230 clutch
- > Wichita 325 Auxiliary brake standard

Drawworks Options

- > Parmac Model V80 hydrobrake
- > LEBUS grooving on main drum - 1 1/8" diameter
- > Rotary drive-torque shaft from right angle box
- > Crown block saver
- > Disc brake in lieu of Parmac Auxiliary brake

Mast Model 122 x 440 Twin Box (per API 4F)

- > Twin box leg fixed base design allows fast positioning of rig before mast is raised. Clear height is 122' below crown.
- > Static hook load capacity:
 - on 8 lines 400,000 lbs.
 - on 10 lines 440,000 lbs.
- > Crossover crown with 36" fast-line sheave plus five 30" sheaves
- > All sheaves mounted on Timken double-row bearings
- > Racking capacity 12,000' of 4 1/2" drill pipe
- > Two hydraulic raising rams and two hydraulic telescoping rams
- > 1 1/8" wire line standard

Mast Options

- > Mast lights, standpipes, 24" sandline sheave
- > Hydraulic cathead assembly

Drive Train

- > Twin C15 or Ser 60 Detroit (475 to 540 HP Twin engine)
- > Allison CLT 6061 transmission
- > Optional M6610 Allison transmission (gear driven compound behind the transmissions)
- > Engine, transmission, and compound mounted in rubber above deck for easy access
- > Pressure lubricated combination right-angle box/drop box for drive to drawworks, rotary drive

Trailer

- > Four axle heavy duty trailer is main frame
- > Four axle heavy duty air ride suspension @ 25,000 lbs. capacity
- > Attachments are ready for rear dolly and front jeep

Trailer Options

- > Tool boxes, extra fuel tanks, spare tires, operator platforms can be supplied as needed

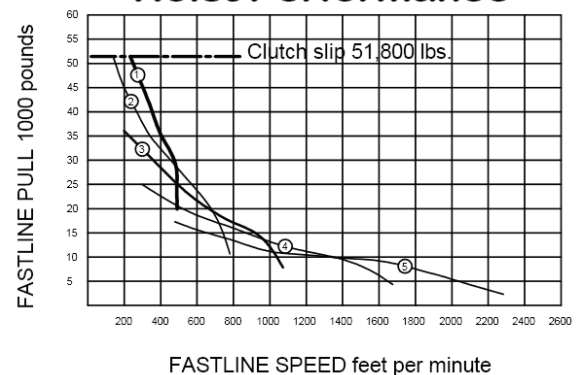
Controls and Hydraulic System

- > The console panel for all leveling jacks, mast raising and extending cyl., engine, transmission, and main drum are located at one position for simple, quick rig-up. Operator's console can be provided movable to 12', 15', or 18' 6".
- > 50 gpm hydraulic pump for all rig hydraulics and tong operation
- > Filters provided on pressure and return lines

Options

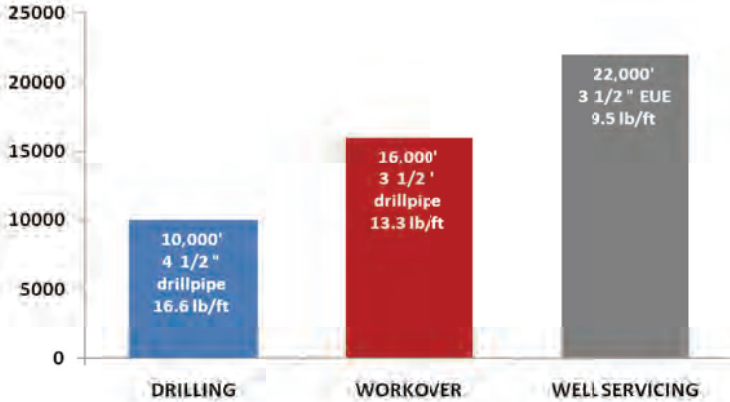
- > 70 gpm hydraulic pump
- > Hydraulic oil cooler for continuous use and hot climate applications
- > Single or dual 12,000 lbs. catline winch for safe, efficient lifting
- > Hydraulic catworks for precise control of make-up and break-out torques
- > Cold weather packages for -40° operation
- > Folding platforms off operator side of rig
- > Spare line spool
- > Mast lite package
- > Rig ramps and crossbase supports
- > Rig substructure - Hydraulic Telescopic type
- > Rotary chain case drive
- > Optional 5th trailer axle with lift

Hoist Performance





LCI-1000-C2



Drawworks Model 1000/4212-42

Main Drum

- > Demountable, forged steel brake rims are 42" diameter x 12" wide
- > Brakes are cooled by circulating water
- > Drum shaft diameter is 6 1/2"
- > Single line pull is 45,000 lbs.
- > Outboard Eaton (Fawick) clutch
- > Parmac Model 202 Auxiliary brake standard

Sandline Drum

- > Demountable, forged steel brake rims are 42" diameter x 8" wide
- > Water splash brake cooling
- > Wireline capacity per AOSC approved formula:
 - 16,500' of 9/16"
 - 13,400' of 5/8"
- > Outboard Eaton (Fawick) clutch

Drawworks Options

- > LEBUS grooving on main drum - 1 1/8" diameter
- > Rotary drive-torque shaft from right angle box
- > Crown block saver
- > Disc brake in lieu of Parmac Auxiliary brake

Mast Model 116 x 410 Twin Box (per API 4F)

- > Twin box leg fixed base design allows fast positioning of rig before mast is raised. Clear height is 116' below crown.
- > Static hook load capacity:
 - on 8 lines 360,000 lbs.
 - on 10 lines 410,000 lbs.
- > Crossover crown with 36" fast-line sheave plus five 30" sheaves
- > All sheaves mounted on Timken double-row bearings
- > Racking capacity 10,080' of 4 1/2" drill pipe
- > Two hydraulic raising rams and two hydraulic telescoping rams
- > 1 1/8" wire line standard

Mast Options

- > Mast lights, standpipes, 24" sandline sheave
- > Optional Mast Model 114 x 350 gives 114' clear height and 350,000 lbs. capacity on 8 lines

Drive Train

- > Twin C15 or Ser 60 Detroit (475 to 540 HP Twin engine)
- > Allison CLT 6061 transmission (gear driven compound behind the transmissions)
- > Engine, transmission, and compound mounted in rubber above deck for easy access
- > Pressure lubricated combination right-angle box/drop box for drive to drawworks, rotary drive, and rear bogies

Carrier - Seven Axle

- > Three front steering axles (rated at 22,000 lbs. each) have spring suspension
- > Rear tandem driving axles (rated at 50,000 lbs. total) have walking beam suspension
- > Third driver rear axle with air bag lift suspension is rated at 25,000 lbs. capacity
- > Pusher axles with air lift suspension is rated at 25,000 lbs. capacity

Carrier Options

- > Two powered front steering axles are optional for use in rough or muddy terrain
- > Trailer models are available with either a single drop (gooseneck) or straight (rough terrain) design
- > Tool boxes, extra fuel tanks, spare tires, operator platforms can be supplied as needed

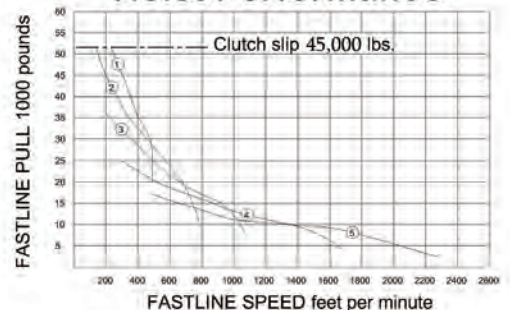
Controls and Hydraulic System

- > The console panel for all leveling jacks, mast raising and extending cyl., engine, transmission, and main drum are located at one position for simple, quick rig-up. Operator's console can be provided movable to 12', 15', or 18' 6".
- > 50 gpm hydraulic pump for all rig hydraulics and tong operation
- > Filters provided on pressure and return lines

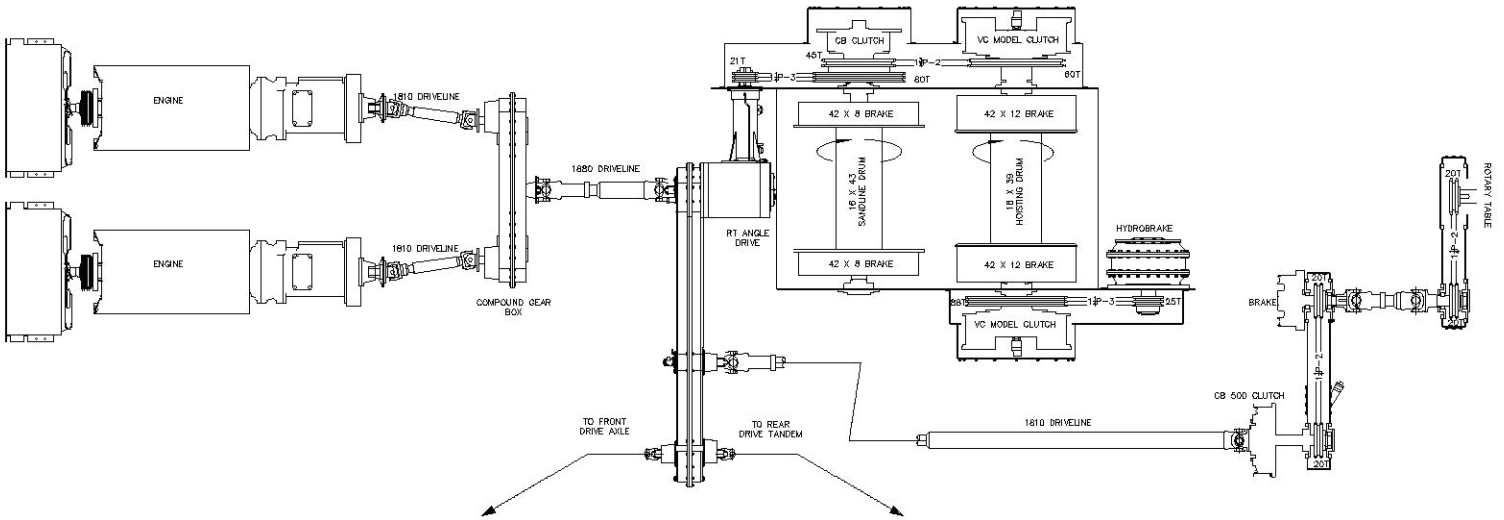
Options

- > 70 gpm hydraulic pump
- > Hydraulic oil cooler for continuous use and hot climate applications
- > Single or dual 8,000 lbs. or 12,000 lbs. catline winch for safe, efficient lifting
- > Hydraulic catworks for precise control of make-up and break-out torques
- > Cold weather packages for -40° operation
- > Folding platforms off operator side of rig
- > Spare line spool
- > Mast lite package
- > Rig ramps and crossbase supports
- > Rig substructure -Hydraulic Telescopic type
- > Rotary chain case drive

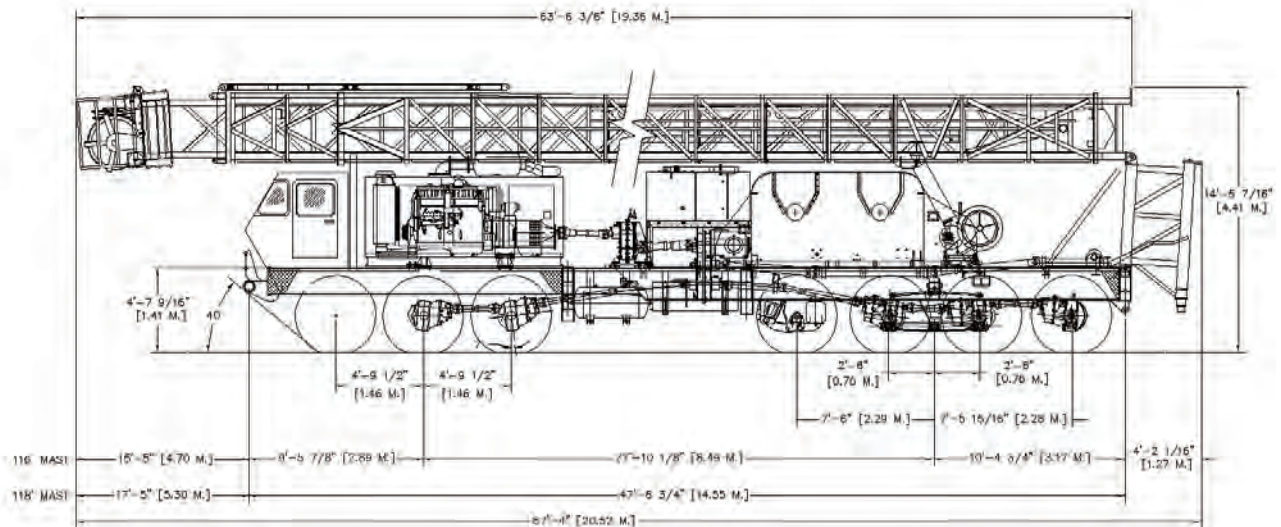
Hoist Performance



Power Flow Diagram

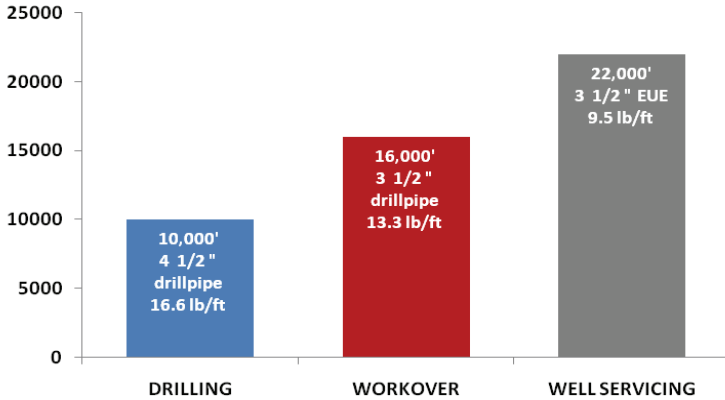


Vehicle Layout





LCI-1000-C1



Drawworks Model 1000/4212-42

Main Drum

- > Demountable, forged steel brake rims are 42" diameter x 12" wide
- > Brakes are cooled by circulating water
- > Drum shaft diameter is 6 1/2"
- > Single line pull is 45,000 lbs.
- > Outboard Eaton (Fawick) clutch
- > Parmac Model 202 Auxiliary brake standard

Drawworks Options

- > LEBUS grooving on main drum - 1 1/8" diameter
- > Rotary drive-torque shaft from right angle box
- > Crown block saver
- > Disc brake in lieu of Parmac Auxiliary brake

Mast Model 116 x 410 Twin Box (per API 4F)

- > Twin box leg fixed base design allows fast positioning of rig before mast is raised. Clear height is 116' below crown.
- > Static hook load capacity:
 - on 8 lines 360,000 lbs.
 - on 10 lines 410,000 lbs.
- > Crossover crown with 36" fast line sheave plus five 30" sheaves
- > All sheaves mounted on Timken double row bearings
- > Racking capacity 10,080' of 4 1/2" drill pipe
- > Two hydraulic raising rams and two hydraulic telescoping rams
- > 1 1/8" wire line standard

Mast Options

- > Mast lights, standpipes, 24" sandline sheave

Drive Train

- > Twin C15 or Ser 60 Detroit (475 to 540 HP Twin engine)
- > Allison CLT 6061 transmission
- > Optional 6610 Allison Series (gear driven compound behind the transmissions)
- > Engine, transmission, and compound mounted in rubber above deck for easy access
- > Pressure lubricated combination right-angle box/drop box for drive to drawworks, rotary drive, and rear bogies

Carrier - Seven axle

- > Three front steering axles (rated at 22,000 lbs. each) have spring suspension
- > Rear tandem driving axles (rated at 50,000 lbs. total) have walking beam suspension
- > Third driver rear axle with air bag lift suspension is rated at 25,000 lbs. capacity
- > Pusher axles with air lift suspension is rated at 25,000 lbs. capacity

Carrier Options

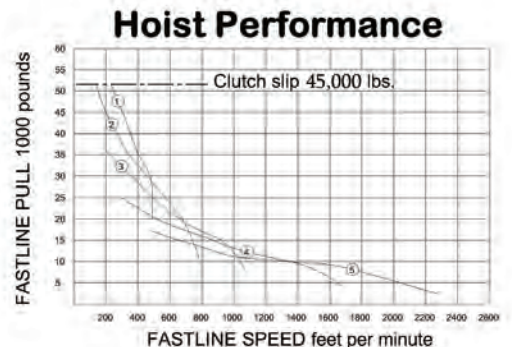
- > Two powered front steering axles are optional for use in rough or muddy terrain
- > Trailer models are available with either a single drop (gooseneck) or straight (rough terrain) design
- > Tool boxes, extra fuel tanks, spare tires, operator platforms can be supplied as needed

Controls and Hydraulic System

- > The console panel for all leveling jacks, mast raising and extending cyl., engine, transmission, and main drum are located at one position for simple, quick rig-up. Operator's console can be provided movable to 12', 15', or 18' 6".
- > 50 gpm hydraulic pump for all rig hydraulics and tong operation
- > Filters provided on pressure and return lines

Options

- > 70 gpm hydraulic pump
- > Hydraulic oil cooler for continuous use and hot climate applications
- > Single or dual 8,000 lbs. or 12,000 lbs. catline winch for safe, efficient lifting
- > Hydraulic catworks for precise control of make-up and break-out torques
- > Cold weather packages for -40° operation
- > Folding platforms off operator side of rig
- > Spare line spool
- > Mast lite package
- > Rig ramps and crossbase supports
- > Rig substructure - Hydraulic Telescopic type
- > Rotary chain case drive

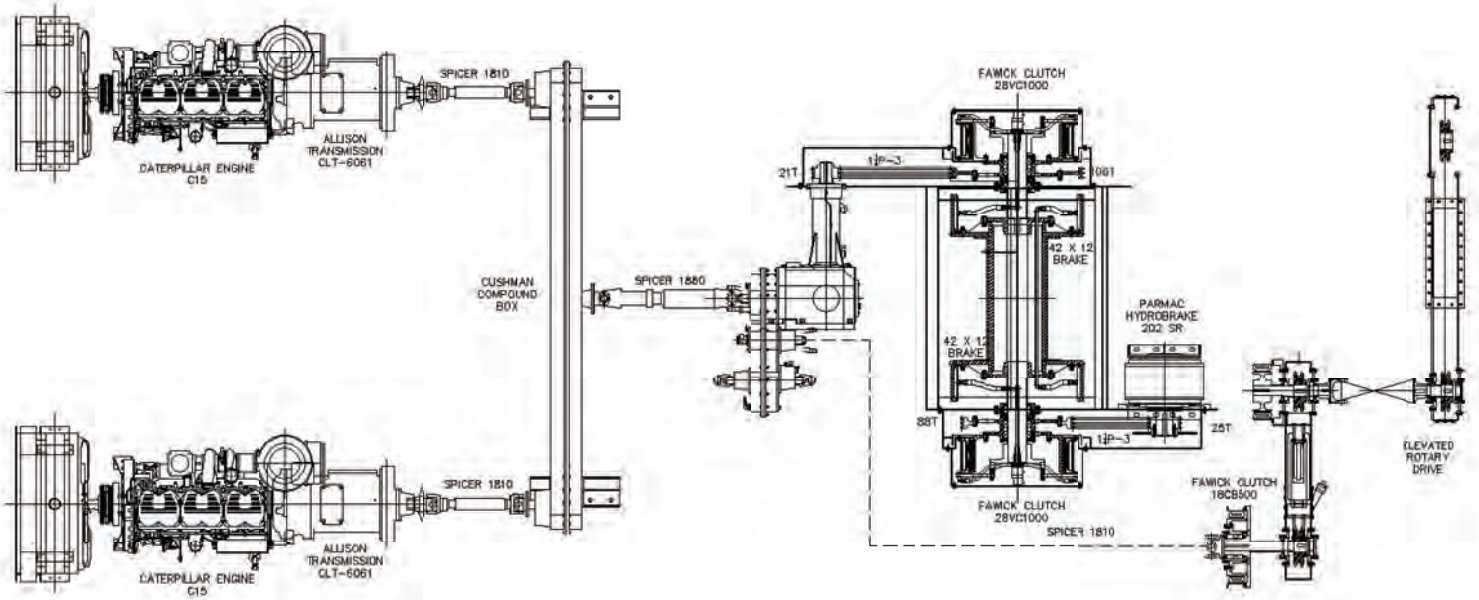




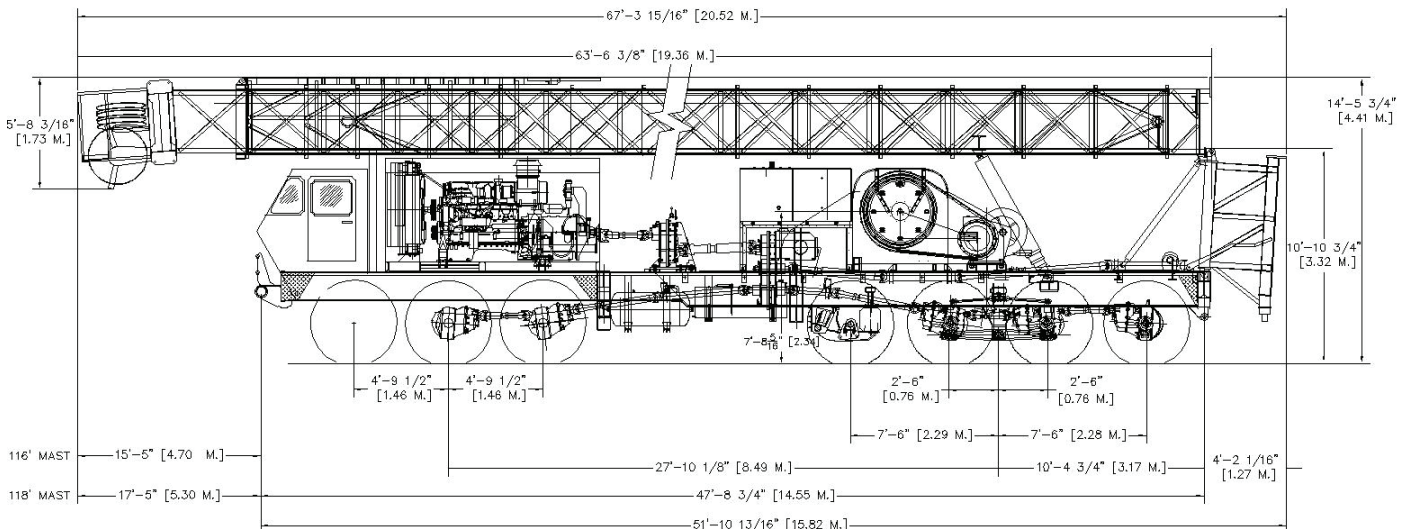
LCI-1000-C1



Power Flow Diagram

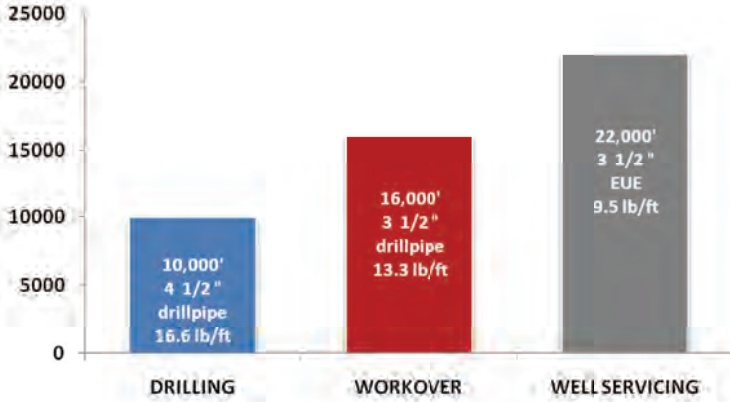


Vehicle Layout





LCI-750-C2



Drawworks Model 750/4212-42

Main Drum

- > Demountable, forged steel brake rims are 42" diameter x 12" wide
- > Brakes are cooled by circulating water
- > Drum shaft diameter is 6 1/2"
- > Single line pull is 45,000 lbs.
- > Outboard Eaton (Fawick) clutch
- > Parmac Model 202 Auxiliary brake standard

Sandline Drum

- > Demountable, forged steel brake rims are 42" diameter x 8" wide
- > Water splash brake cooling
- > Wireline capacity per AOSC approved formula:
 - 16,500' of 9/16"
 - 13,400' of 5/8"
- > Outboard Eaton (Fawick) Clutch

Drawworks Options

- > LEBUS grooving on main drum - 1 1/8" diameter
- > Rotary drive-torque shaft from right angle box
- > Crown block saver
- > Disc brake in lieu of Parmac Auxiliary brake

Mast Model 116 x 365 Twin Box (per API 4F)

- > Twin box leg fixed base design allows fast positioning of rig before mast is raised. Clear height is 116' below crown.
- > Static hook load capacity:
 - on 8 lines 350,000 lbs.
 - on 10 lines 365,000 lbs.
- > Crossover crown with 36" fast line sheave plus five 30" sheaves
- > All sheaves mounted on Timken double row bearings
- > Racking capacity 10,080' of 4 1/2" drill pipe
- > Two hydraulic raising rams and two hydraulic telescoping rams
- > 1 1/8" wire line standard

Mast Options

- > Mast lights, standpipes, 24" sandline sheave

Drive Train

- > Twin C15 or Ser 60 Detroit (475 to 540 HP Twin engine)
- > Allison CLT 6061 transmission (gear driven compound behind the transmissions)
- > Engine, transmission, and compound mounted in rubber above deck for easy access
- > Pressure lubricated combination right-angle box/drop box for drive to drawworks, rotary drive, and rear bogies

Carrier – Seven Axle

- > Three front steering axles (rated at 22,000 lbs. each) have spring suspension
- > Rear tandem driving axles (rated at 50,000 lbs. total) have walking beam suspension
- > Third driver rear axle with air bag lift suspension is rated at 25,000 lbs. capacity
- > Pusher axles with air lift suspension is rated at 25,000 lbs. capacity

Carrier Options

- > Two powered front steering axles are optional for use in rough or muddy terrain
- > Trailer models are available with either a single drop (gooseneck) or straight (rough terrain) design
- > Tool boxes, extra fuel tanks, spare tires, operator platforms can be supplied as needed

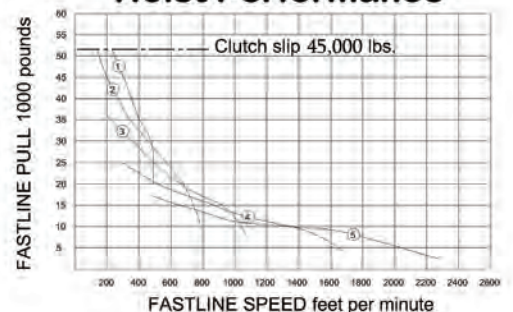
Controls and Hydraulic System

- > The console panel for all leveling jacks, mast raising and extending cyl., engine, transmission, and main drum are located at one position for simple, quick rig-up. Operator's console can be provided movable to 12', 15', or 18' 6".
- > 50 gpm hydraulic pump for all rig hydraulics and tong operation
- > Filters provided on pressure and return lines

Options

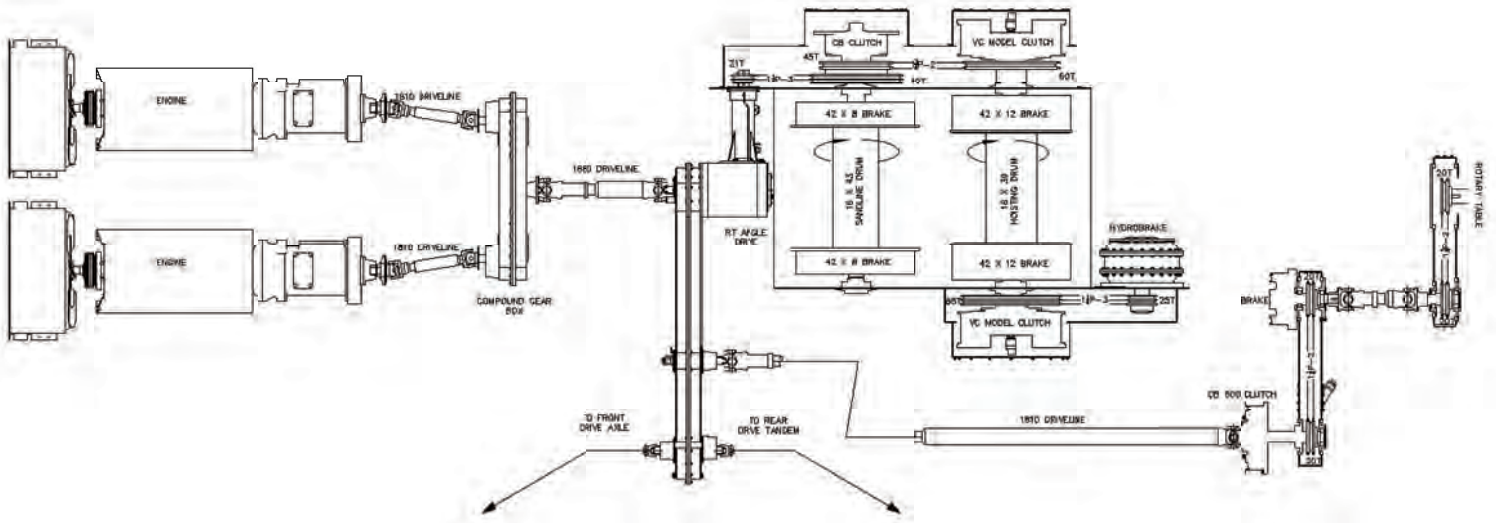
- > 70 gpm hydraulic pump
- > Hydraulic oil cooler for continuous use and hot climate applications
- > Single or dual 8,000 lbs. catline winch for safe, efficient lifting
- > Hydraulic catworks for precise control of make-up and break-out torques
- > Cold weather packages for -40° operation
- > Folding platforms off operator side of rig
- > Spare line spool
- > Mast lite package
- > Rig ramps and crossbase supports
- > Rig substructure - Hydraulic Telescopic type
- > Rotary chain case drive

Hoist Performance

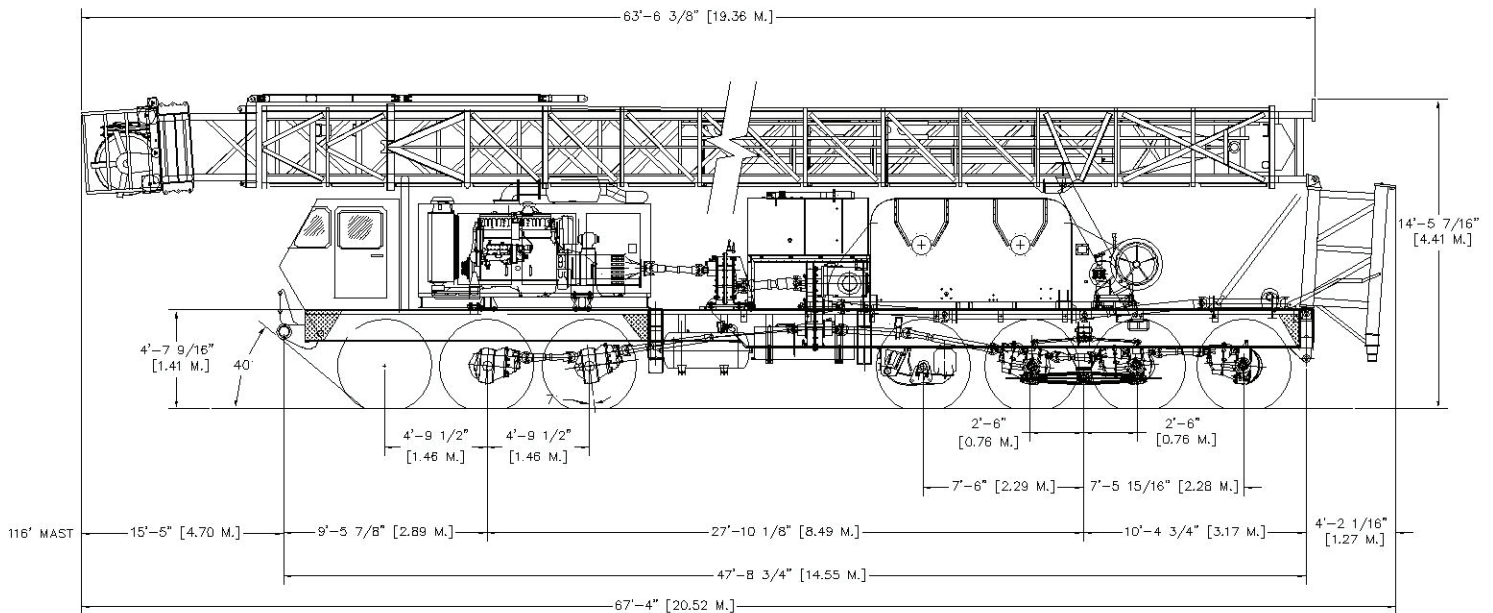




Power Flow Diagram

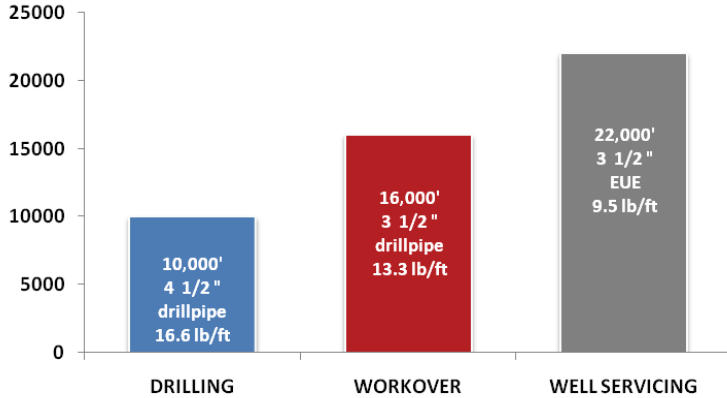


Vehicle Layout





LCI-750-C1



Drawworks Model 750/4212-42

Main Drum

- > Demountable, forged steel brake rims are 42" diameter x 12" wide
- > Brakes are cooled by circulating water
- > Drum shaft diameter is 6 1/2"
- > Single line pull is 45,000 lbs.
- > Outboard Eaton (Fawick) clutch
- > Parmac Model 202 Auxiliary brake standard

Drawworks Options

- > LEBUS grooving on main drum - 1 1/8" diameter
- > Rotary drive-torque shaft from right angle box
- > Crown block saver
- > Disc brake in lieu of Parmac Auxiliary brake

Mast Model 116 x 365 Twin Box (per API 4F)

- > Twin box leg fixed base design allows fast positioning of rig before mast is raised. Clear height is 116' below crown.
- > Static hook load capacity:
 - on 8 lines 350,000 lbs.
 - on 10 lines 365,000 lbs.
- > Crossover crown with 36" fast line sheave plus five 30" sheaves
- > All sheaves mounted on Timken double row bearings
- > Racking capacity 10,080' of 4 1/2" drill pipe
- > Two hydraulic raising rams and two hydraulic telescoping rams
- > 1 1/8" wire line standard

Mast Options

- > Mast lights, standpipes

Drive Train

- > Twin C15 or Ser 60 Detroit (475 to 540 HP Twin engine)
- > Allison CLT 6061 transmission
- > Optional 6610 Allison Series (gear driven compound behind the transmissions)
- > Engine, transmission, and compound mounted in rubber above deck for easy access
- > Pressure lubricated combination right-angle box/drop box for drive to drawworks, rotary drive, and rear bogies

Carrier - Seven Axle

- > Three front steering axles (rated at 22,000 lbs. each) have spring suspension
- > Rear tandem driving axles (rated at 50,000 lbs. total) have walking beam suspension
- > Third driver rear axle with air bag lift suspension is rated at 25,000 lbs. capacity
- > Pusher axles with air lift suspension is rated at 25,000 lbs. capacity

Carrier Options

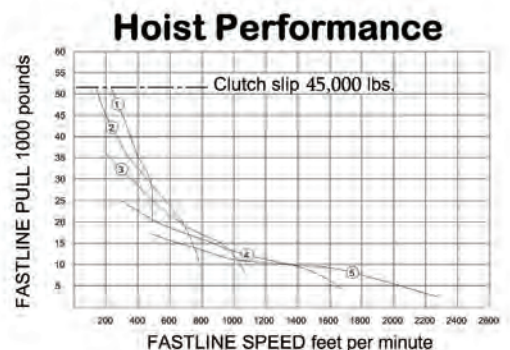
- > Two powered front steering axles are optional for use in rough or muddy terrain
- > Trailer models are available with either a single drop (gooseneck) or straight (rough terrain) design
- > Tool boxes, extra fuel tanks, spare tires, operator platforms can be supplied as needed

Controls and Hydraulic System

- > The console panel for all leveling jacks, mast raising and extending cyl., engine, transmission, and main drum are located at one position for simple, quick rig-up. Operator's console can be provided movable to 12', 15', or 18' 6".
- > 50 gpm hydraulic pump for all rig hydraulics and tong operation
- > Filters provided on pressure and return lines

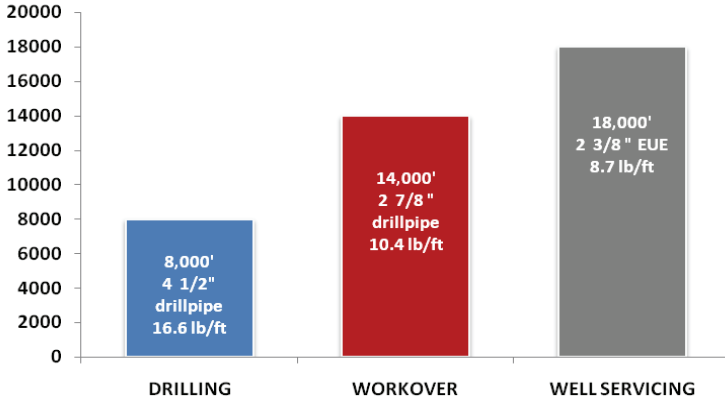
Options

- > 70 gpm hydraulic pump
- > Hydraulic oil cooler for continuous use and hot climate applications
- > Single or dual 8,000 lbs. or 12,000 lbs. catline winch for safe, efficient lifting
- > Hydraulic catworks for precise control of make-up and break-out torques
- > Cold weather packages for -40° operation
- > Folding platforms off operator side of rig
- > Spare line spool
- > Mast lite package
- > Rig ramps and crossbase supports
- > Rig substructure - Hydraulic Telescopic type
- > Rotary chain case drive





LCI-550-C



Drawworks Model 550/42-12, 42-8

Main Drum

- > Demountable, forged steel brake rims are 42" diameter x 12" wide
- > Drum shaft diameter is 6 1/2"
- > Single line pull is 42,500 lbs.
- > Parmac Model 202 Auxiliary brake standard

Sandline Drum

- > Demountable, forged steel brake rims are 42" diameter x 8" wide
- > Wireline capacity per AOSC approved formula:
 - 14,400' of 9/16"
 - 11,800' of 5/8"

- > Outboard clutch for easy access

Drawworks Options

- > Water splash brake cooling
- > LEBUS grooving for main drum - 1" diameter
- > Rotary drive attachment @ rear of rig
- > Crown block saver
- > Disc brake in lieu of Parmac Auxiliary brake

Mast Model 104/250 (Double Tubing, Triple Rods per API 4F)

- > Four leg fixed base design allows fast positioning of rig before mast is raised. Clear height is 104' below crown.
- > Static hook load capacity:
 - on 6 lines 225,000 lbs.
 - on 8 lines 250,000 lbs.

- > Crossover crown with 36" fast line sheave plus 24" sheaves for cluster; 30" deadline. Sandline 9/16 x 24" sheave.

- > All sheaves mounted on Timken double row bearings
- > Racking platform capacity 22,200' of 2 7/8" EUE tubing
- > 1" wire line standard

Mast Options

- > Mast lights, rod hangers, work platform, standpipes, 24" sandline sheave
- > Optional Mast Model:
 - 96/250 tubing mast
 - 110/250 tubing mast
 - 104/250 twin box mast
 - 110/250 twin box mast

Drive Train

- > Cat C15 or Ser 60 Detroit (475 to 540 HP)
- > Allison CLT 6061 six speed automatic transmission
- > Optional 5610 Allison or equal (engine and transmission mounted in rubber on carrier for easy above-deck access)
- > Engine cover for weather protection

Carrier – Five Axle

- > Front axles (rated at 22,000 lbs. each) have spring suspension
- > Rear tandem axles (rated at 50,000 lbs. total) have walking beam suspension
- > Third (non-driving) rear axle with air bag lift suspension is rated at 25,000 lbs. capacity

Carrier Options

- > Two powered front steering axles are optional for use in rough or muddy terrain
- > Three rear drive axles for off road
- > Trailer models are available with either a single drop (gooseneck) or straight (rough terrain) design
- > Tool boxes, extra fuel tanks, spare tires, operator platforms can be supplied as needed

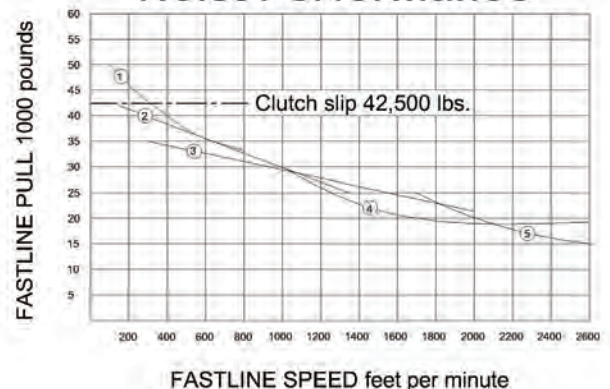
Controls and Hydraulic System

- > The console panel for all leveling jacks, mast raising and extending cyl., engine, transmission and main drum located at one position for simple, quick rig-up. Operator's console can be provided movable to 10'-6", 12', or 15' as required.
- > 50 gpm hydraulic pump for all rig hydraulics and tong operation
- > Filters provided on pressure and return lines

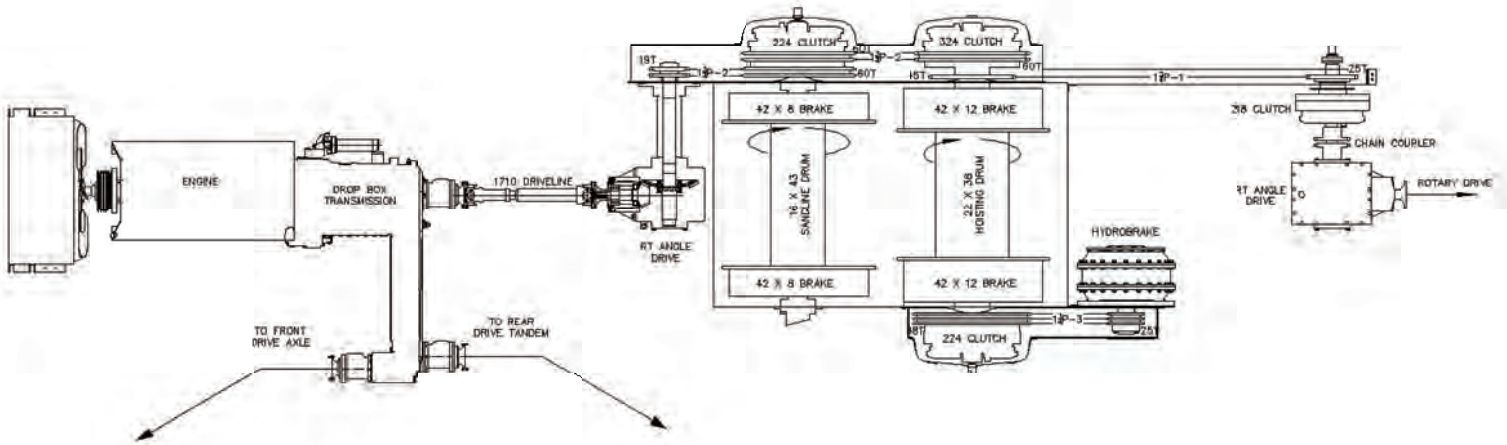
Options

- > 70 gpm hydraulic pump
- > Hydraulic oil cooler for continuous use and hot climate applications
- > Single or dual 8,000 lbs. hyd. catline winch located at rear of rig
- > Hydraulic catworks for precise control of make-up and break-out torques
- > Cold weather packages for -40° operation
- > Folding platforms off operator side of rig
- > Spare line spool
- > Mast lite package
- > Rig ramps and crossbase supports
- > Rig substructure assembly

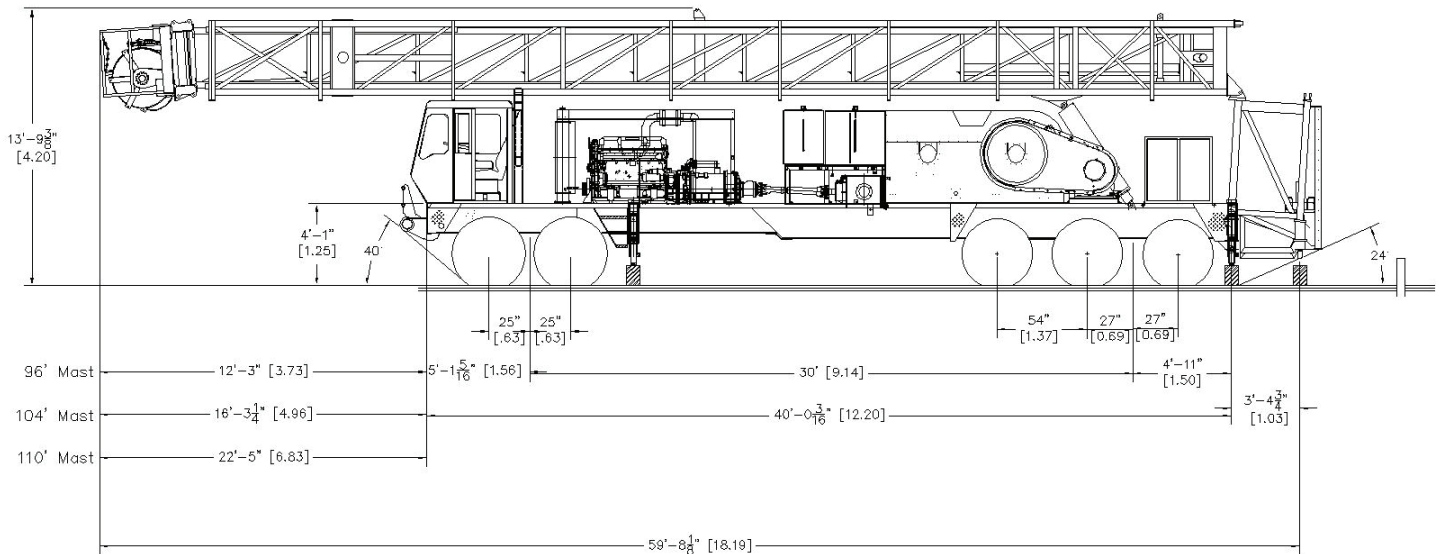
Hoist Performance



Power Flow Diagram

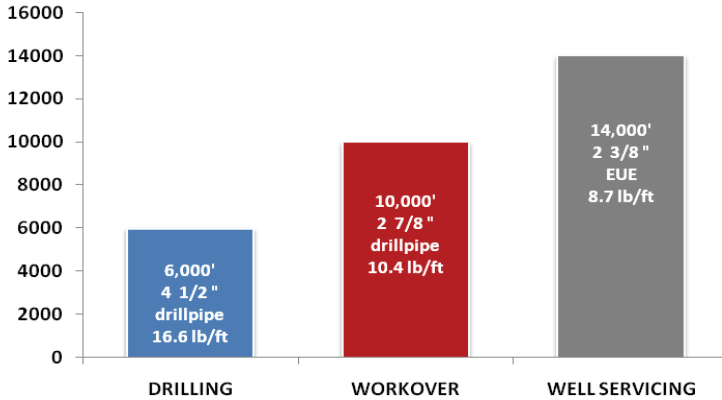


Vehicle Layout





LCI-350-C



Drawworks Model 350/42-12, 38-8

Main Drum

- > Demountable, forged steel brake rims are 42" diameter x 12" wide
- > Drum shaft diameter is 5 3/4"
- > Single line pull is 37,500 lbs.
- > 1" wire line size standard

Sandline Drum

- > Demountable, forged steel brake rims are 38" diameter x 8" wide
- > Wireline capacity per AOSC approved formula:
12,760' of 9/16"
10,530' of 5/8"

Drawworks Options

- > Drawworks Model 350/42-10, 38-8
- > Water splash brake cooling
- > Parmac Model 122 hydrobrake
- > LEBUS grooving standard on main drum - 1" diameter
- > Rotary drive attachment.
- > Crown block saver
- > Disc brake in lieu of Parmac Auxiliary brake
- > Mast Model 96/225 (Double Tubing, Triple Rods per API 4F)
- > Mast Options four leg fixed base design allows fast positioning of rig before mast is raised. Clear height is 96' below crown.
- > Static hook load capacity:
on 4 lines 180,000 lbs.
on 6 lines 225,000 lbs.

- > Crossover crown with 30" fast line sheave plus three 24" sheaves
- > All sheaves mounted on Timken double row bearings
- > Racking platform capacity 19,200' of 2 7/8" EUE tubing
- > Hydraulic rams for raising and telescoping

Mast Options

- > Mast lights, rod hangers, work platform, standpipes, 24" sandline sheave
- > Optional Mast Model:
104/225 available for 104' clear height
96/225 twin box mast
104/225 twin box mast

Drive Train

- > Cat or Detroit Ser 60 (400 to 450 HP) Allison CLT 5961 six speed transmission (engine and transmission mounted in rubber on carrier for easy above-deck access)
- > Engine cover for weather protection

Carrier

- > Four axle carrier for special weight conditions
- > Std. five axle carrier offered as required for heavy duty configurations
- > Front axles (rated at 22,000 lbs. each) have spring suspension
- > Rear tandem axles (rated at 50,000 lbs. total) have walking beam suspension

Carrier Options

- > Two powered front steering axles are optional for use in rough or muddy terrain
- > Third (non-driving) rear axle with air bag lift suspension is rated at 25,000 lbs. capacity
- > Trailer models are available with either a single drop (gooseneck) or straight (rough terrain) design
- > Tool boxes, extra fuel tanks, spare tires, operator platforms can be supplied as needed

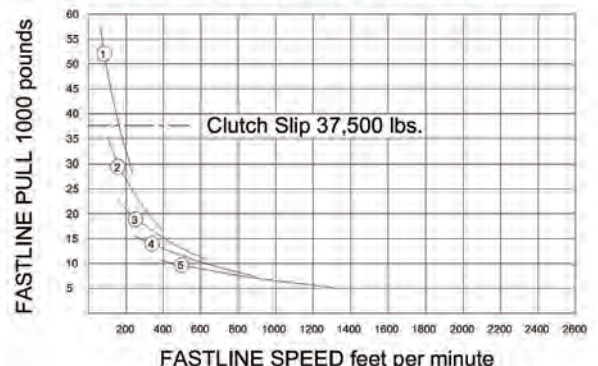
Controls and Hydraulic System

- > The console panel for all leveling jacks, mast raising and extending cyl., engine, transmission and main drum located at one position for simple, quick rig-up. Operator's console can be provided movable to 10'-6", 12', or 14' as required.
- > 50 gpm hydraulic pump for all rig hydraulics and tong operation
- > Filters provided on pressure and return lines

Options

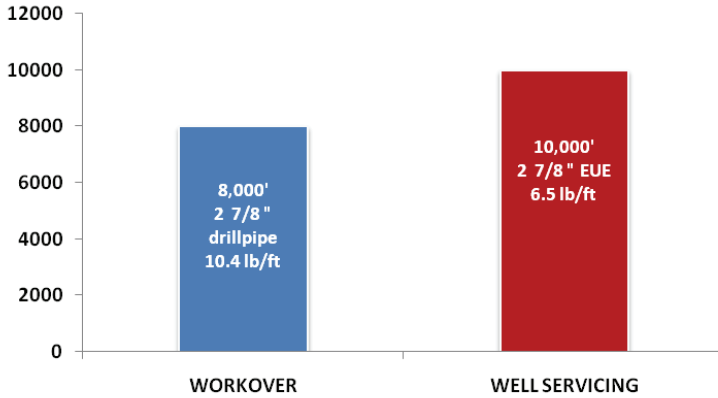
- > 70 gpm hydraulic pump (hydraulic oil cooler for continuous use and hot climate applications)
- > Single or dual 8,000 lbs. hyd. catline winch located at rear of rig
- > Hydraulic catworks for precise control of make-up and break-out torques
- > Cold weather packages for -40° operation
- > Folding platforms off operator side of rig
- > Spare line spool on rig
- > Mast lite package
- > Rig ramps and crossbase assembly.
- > Rig substructure assembly

Hoist Performance





LCI-250-C



Drawworks Model 250/38-10, 38-8

Main Drum

- > Demountable, forged steel brake rims are 38" diameter x 10" wide (drum shaft diameter is 5 3/4")
- > Single line pull is 37,500 lbs.
- > 1" wire line size standard

Sandline Drum

- > Demountable, forged steel brake rims are 38" diameter x 8" wide
- > Wireline capacity per AOSC approved formula:
12,760' of 9/16"
10,530' of 5/8"

Drawworks Options

- > Drawworks Model 250/38-10, 38-8
- > Water splash brake cooling
- > LEBUS grooving on drum - 1" diameter
- > Rotary drive attachment
- > Crown block saver
- > Disc brake in lieu of Parmac Auxiliary brake
- > **Mast Model 96/180 (Double Tubing, Triple Rods per API 4F)**
- > Four leg fixed base design allows fast positioning of rig before mast is raised. Clear height is 96' below crown.
- > Static hook load capacity:
on 4 lines 180,000 lbs.
on 6 lines 225,000 lbs.
- > Crossover crown with 24" fast line sheave plus three 24" sheaves
- > All sheaves mounted on Timken double row bearings
- > Racking platform capacity 18,360' of 2 7/8" EUE tubing
- > Hydraulic rams for raising and telescoping

Mast Options

- > Speed kit crown, mast lights, rod hangers, work platform, standpipes, 24" sandline sheave
- > Optional Mast Model:
96/225 twin box mast
71/150 twin box mast

Drive Train

- > Cat or Detroit (230 to 325 HP) Allison five speed transmission
- > Engine and transmission mounted in rubber on carrier for easy above-deck access
- > Engine cover for weather protection

Carrier

- > Four axle carrier available with long wheelbase (338") for even weight distribution or with short wheelbase (297") for a shorter turning radius
- > Front axles (rated at 22,000 lbs. each) have spring suspension.
- > Rear tandem axles (rated at 50,000 lbs. total) have walking beam suspension

Carrier Options

- > Two powered front steering axles are optional for use in rough or muddy terrain
- > Trailer models are available with either a single drop (gooseneck) or straight (rough terrain) design
- > Tool boxes, extra fuel tanks, spare tires, operator platforms can be supplied as needed

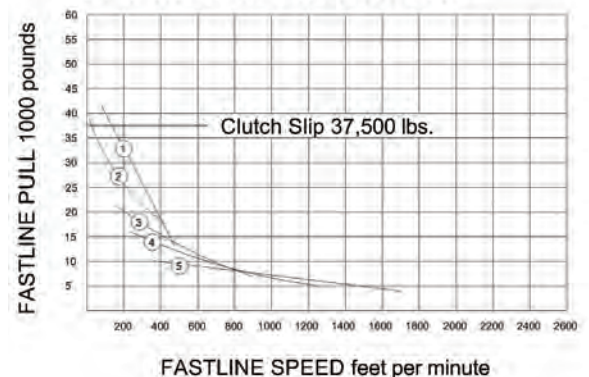
Controls and Hydraulic System

- > The console panel for all leveling jacks, mast raising and extending cyl., engine, transmission and main drum located at one position for simple, quick rig-up. Operator's console can be provided movable to 10'-6", 12', or 14' as required.
- > 50 gpm hydraulic pump for all rig hydraulics and tong operation
- > Filters provided on pressure and return lines

Options

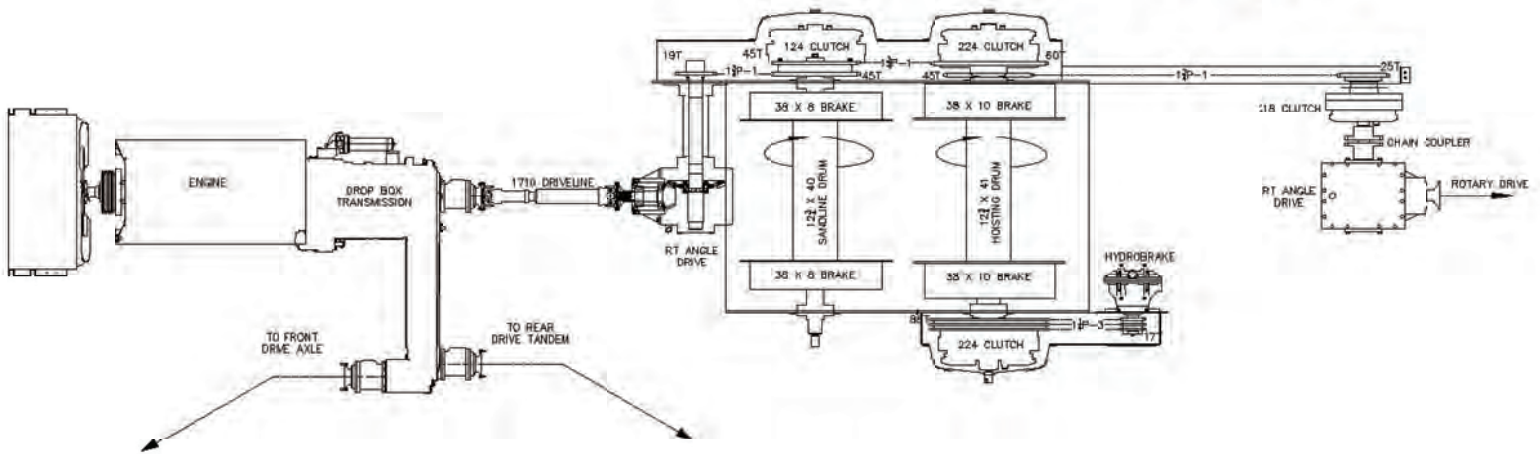
- > Hydraulic oil cooler for continuous use and hot climate applications
- > Single or dual 8,000 lbs. hyd. catline winch for safe, efficient lifting around the well site
- > Hydraulic catworks for precise control of make-up and break-out torques
- > Cold weather packages for -40° operation
- > Folding platforms off operator side of rig
- > Spare line spool on rig
- > Mast lite package
- > Install drawworks on conventional truck

Hoist Performance

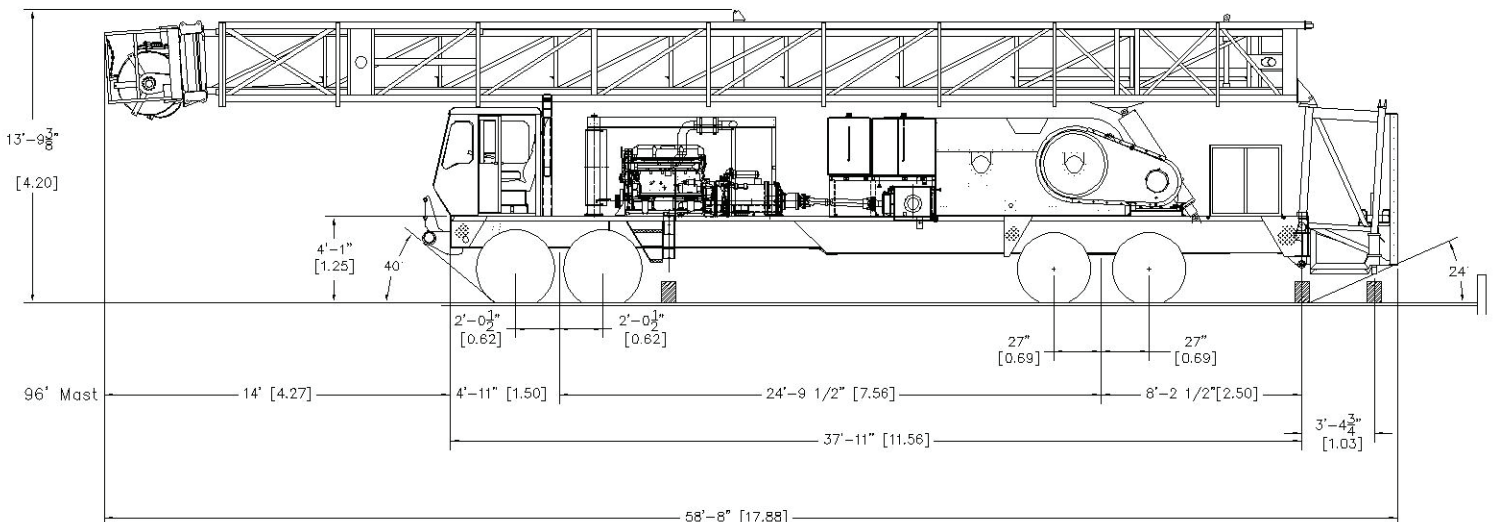




Power Flow Diagram



Vehicle Layout



MADE IN TEXAS

LOADCRAFT INDUSTRIES, LTD.



The Best Products, Built by the Best People, for the Best Clients
...Throughout the World.

(800)803-0183

3811 N. BRIDGE • BRADY, TEXAS 76825

www.LOADCRAFT.com

LOADCRAFT INDUSTRIES, LTD.