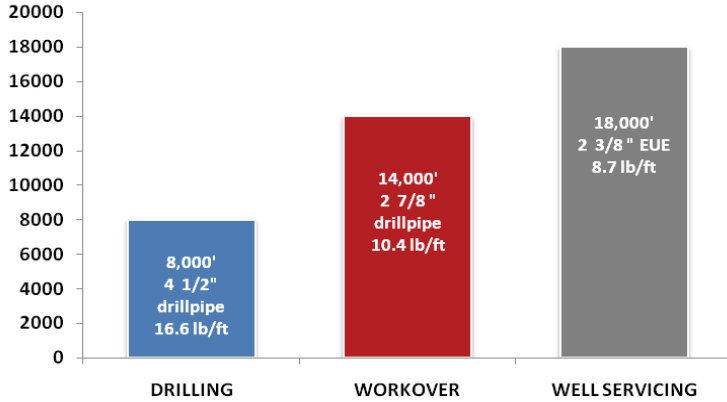




LCI-550-C



Drawworks Model 550/42-12, 42-8

Main Drum

- > Demountable, forged steel brake rims are 42" diameter x 12" wide
- > Drum shaft diameter is 6 1/2"
- > Single line pull is 42,500 lbs.
- > Parmac Model 202 Auxiliary brake standard

Sandline Drum

- > Demountable, forged steel brake rims are 42" diameter x 8" wide
- > Wireline capacity per AOSC approved formula:
 - 14,400' of 9/16"
 - 11,800' of 5/8"
- > Outboard clutch for easy access

Drawworks Options

- > Water splash brake cooling
- > LEBUS grooving for main drum - 1" diameter
- > Rotary drive attachment @ rear of rig
- > Crown block saver
- > Disc brake in lieu of Parmac Auxiliary brake
- > **Mast Model 104/250 (Double Tubing, Triple Rods per API 4F)**
- > Four leg fixed base design allows fast positioning of rig before mast is raised. Clear height is 104' below crown.
- > Static hook load capacity:
 - on 6 lines 225,000 lbs.
 - on 8 lines 250,000 lbs.
- > Crossover crown with 36" fast line sheave plus 24" sheaves for cluster; 30" deadline. Sandline 9/16 x 24" sheave.
- > All sheaves mounted on Timken double row bearings
- > Racking platform capacity 22,200' of 2 7/8" EUE tubing
- > 1" wire line standard

Mast Options

- > Mast lights, rod hangers, work platform, standpipes, 24" sandline sheave
- > Optional Mast Model:
 - 96/250 tubing mast
 - 110/250 tubing mast
 - 104/250 twin box mast
 - 110/250 twin box mast

Drive Train

- > Cat C15 or Ser 60 Detroit (475 to 540 HP)
- > Allison CLT 6061 six speed automatic transmission
- > Optional 5610 Allison or equal (engine and transmission mounted in rubber on carrier for easy above-deck access)
- > Engine cover for weather protection

Carrier – Five Axle

- > Front axles (rated at 22,000 lbs. each) have spring suspension
- > Rear tandem axles (rated at 50,000 lbs. total) have walking beam suspension
- > Third (non-driving) rear axle with air bag lift suspension is rated at 25,000 lbs. capacity

Carrier Options

- > Two powered front steering axles are optional for use in rough or muddy terrain
- > Three rear drive axles for off road
- > Trailer models are available with either a single drop (gooseneck) or straight (rough terrain) design
- > Tool boxes, extra fuel tanks, spare tires, operator platforms can be supplied as needed

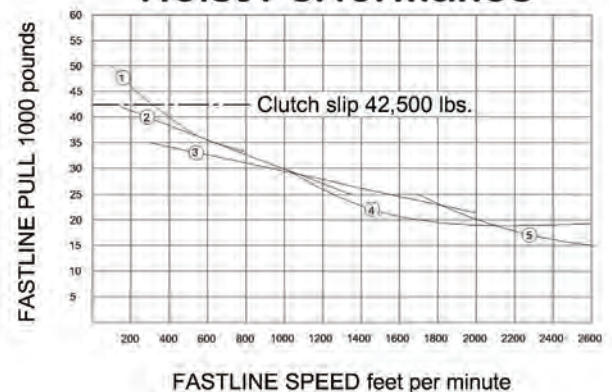
Controls and Hydraulic System

- > The console panel for all leveling jacks, mast raising and extending cyl., engine, transmission and main drum located at one position for simple, quick rig-up. Operator's console can be provided movable to 10'-6", 12', or 15' as required.
- > 50 gpm hydraulic pump for all rig hydraulics and tong operation
- > Filters provided on pressure and return lines

Options

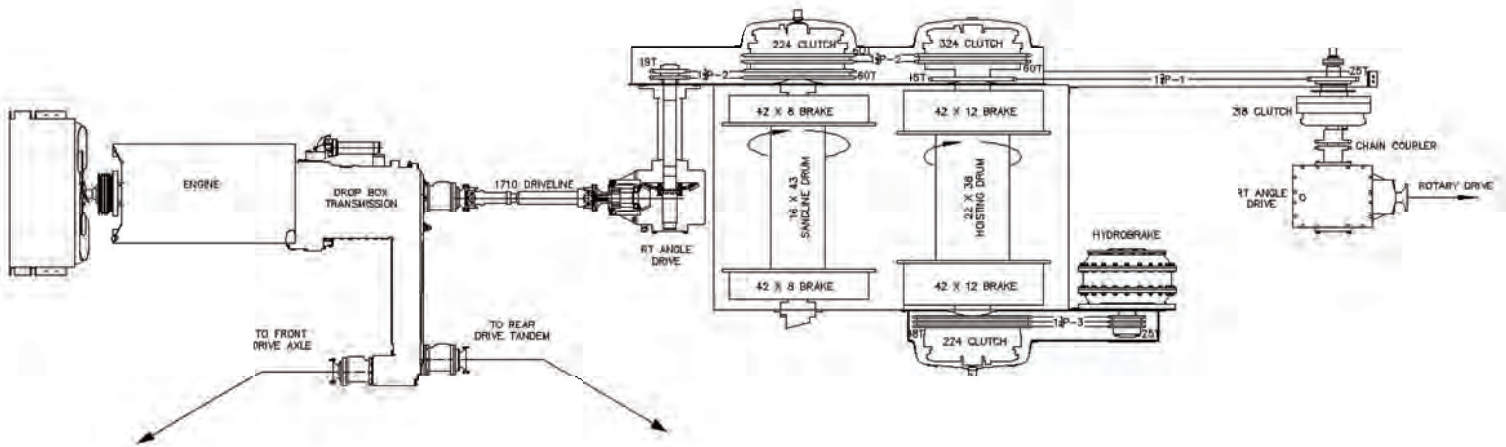
- > 70 gpm hydraulic pump
- > Hydraulic oil cooler for continuous use and hot climate applications
- > Single or dual 8,000 lbs. hyd. catline winch located at rear of rig
- > Hydraulic catworks for precise control of make-up and break-out torques
- > Cold weather packages for -40° operation
- > Folding platforms off operator side of rig
- > Spare line spool
- > Mast lite package
- > Rig ramps and crossbase supports
- > Rig substructure assembly

Hoist Performance

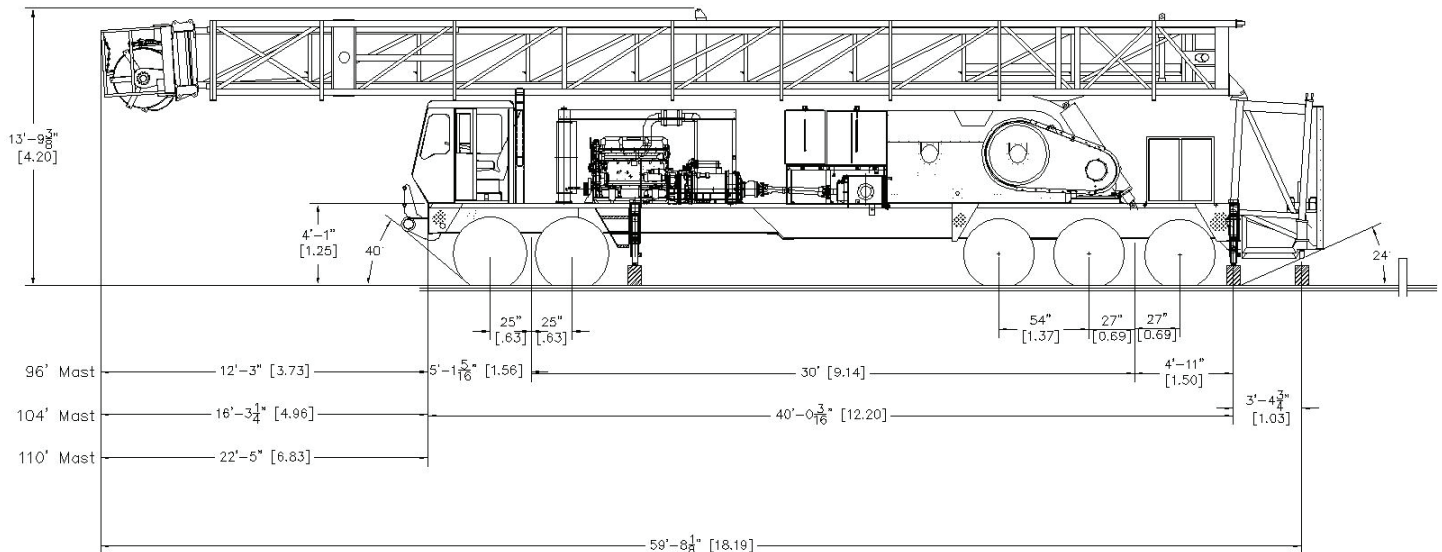




Power Flow Diagram



Vehicle Layout





LOADCRAFT INDUSTRIES, LTD.
LOADCRAFT
Industries, Ltd.